



# BURKE SHIRE COUNCIL

## NEWSLETTER

**Edition 9 - April/May 2007**  
**(Issued on 28 March 2007)**

As the wet is coming to a finish it is now time to come out of hibernation and take stock of all the exciting events and activities that are happening within our Shire. I can't stress enough for you to check notice boards so you don't miss out on relevant information about these events.

We have a couple on huge weekends coming up within the next few months, ie. Barramundi Fishing Competition held over the Easter weekend and the Canoe Races, Horse Races & Bull Spectacular held over the May Day weekend. Further information on these events are included inside this newsletter.

Happy reading!!

Cheryl Portch

### Key Council Dates

Deadline for contributions to next newsletter	24 May 2007
Ordinary Meeting of Council (April)	12 April 2007
Ordinary Meeting of Council (May)	17 May 2007
Good Friday	6 April 2007
Easter Sunday	8 April 2007
Easter Monday	9 April 2007
May Day	7 May 2007
Council Auction (obsolete goods)	28 April 2007

### CURRENT PUBLIC NOTICES

All public notices are displayed at Nowlands, Burketown Post Office, Burketown Pub, Burketown Health Centre, Gregory Downs, Mounigibi and the Shire Office.

Dog Baiting  
Mosquito Fogging  
Cyclone Preparation  
Calico Bag Give Away  
Fines for Dogs Found at Large  
Council Meeting Dates for 2007



## RANGER'S REVIEW



### **CALOTROPE**

Kapok tree, King's crown, Cabbage tree, Rubber bush

*Calotropis procera*

Whilst Calotrope is not a declared noxious weed in Queensland it has become well established on over grazed pastoral land or land disturbed by road making etc. and is poisonous to humans. Reports are that cattle can eat the plant with no known ill effects in the dry season, but if they are subjected to stress (mustering, etc), they may die from Calotrope poisoning.

#### **Description**

Calotrope is a deep rooted, perennial shrub or small tree usually growing to 2.4m high, with opposite oval shaped fleshy green-grey leaves. Stems and leaves exude a milky white sap if they are cut or broken. The bark is whitish in colour and deeply fissured. Clusters of attractive five-petalled white flowers with purple tips and a central purple crown develop on stalks at the end of branches. It produces a mass of seeds which are contained in a large, oval shaped grey-green fruit approximately 7.5-10 cm long. When the fruit dries it bursts open to release the flat brown seeds, each having a parachute of silky hairs which allows them to be carried for long distances by the wind.

#### **Distribution**

Calotrope is native to tropical Africa and Asia. It has been introduced to the southern United States and Brazil and was probably introduced to Australia as a garden plant, or in the packing of camel saddles brought from India in the early 1900's. It has become naturalized in the semiarid north, particularly in the Gulf of Carpentaria Region; Calotrope is a weed of roadsides and watercourses and commonly invades cultivated or over grazed areas where there is little competition from grass. Calotrope can spread rapidly from the base of plants and from seedlings unless there is vigorous competition from grass or other herbs. Even in cases where the above-ground plant has disappeared, Calotrope often regrows from the root system when conditions become favorable.

#### **Importance**

Calotrope successfully competes with desirable pasture species and is capable of forming dense thickets that interfere with stock management, particularly mustering activities. The plant thrives on nitrogen deficient and disturbed soil i.e. alluvial river flats, road sides and other disturbed areas. Parts of Calotrope plant have been used since ancient times for a variety of purposes. Medicinally, it has been used in the treatment of rheumatism, jaundice, syphilis, asthma and snake bite. In Sudan and western India, the latex sap that contains trypsin is used to curdle milk and ferment beer. Calotrope is also reported to contain a bitter principle called calotropin which is a cardiac poison. In the Northern Territory the plant is only palatable to cattle in the semi-arid and tropical areas where no ill-effects have been detected. In the more arid regions of the Territory, cattle seldom, if ever, consume plant parts, even during severe drought. This has led some scientists to believe that environmental conditions may influence whether or not the toxin is present in the plant.

#### **Control**

Once established, Calotrope is difficult to eradicate as the large spongy deep roots survive almost any treatment (including fire). It is susceptible, however to regular cultivation and to some herbicides.

Research has shown several herbicides effective as foliar spray, cut stump, or basal bark methods of control. These are in the process of being registered.



#### **Rangers activities**

- Rubbish bins are being placed back into popular fishing spots as access is obtained.
- Weed spraying (Rubber vine, Calotrope, Mesquite and Prickly acacia) is continuing in problem areas on Council controlled land and Council road reserves.
- Preparing for the first 1080 baiting in May.
- No mosquito fogging carried out so far due to the decrease in mosquito numbers this season.
- Old section of the Burketown Cemetery being rehabilitated.
- New directional signs being produced for each major road intersection in the Burke Shire,. These should be up early in this year's tourist season.
- Bore head area cleared up in preparation for the tourist season.



## GREGORY DOWNS JOCKEY CLUB

### HORSE RACES

Saturday 5 May 2007

First race starts 1pm

Race 1– *Gordon Smith Memorial -Open Handicap 1200m*

Race 2 - *Class 6 Plate (Set Weights) 1000m*

Race 3 - *Burke Shire Cup - Class 4 Handicap 1200m*

Race 4 - *Class 2 QTIS Added Stakes Handicap 1000m*

Race 5 - *Gregory Downs Hotel - Class B Handicap 800m*

***\*\*Fashions on the Field\*\****

Contacts - President : John Clarke Ph:4748 5575 email: suewoodall@bigpond.com  
Secretary: Anne Webber Ph: 4748 5507 email: gouch1@bigpond.com



## **BURKE SHIRE CALENDAR OF EVENTS 2007**

<u>Easter</u> 6 – 8 April	<b><u>The Burketown Barramundi World Fishing Championships</u></b>  Contact: Garry Jeffries 0418 711 734
<u>May Day Weekend 5– 7 May</u> Saturday 5 May	<b><u>Gregory Downs Jockey Club Races</u></b> Contact: Anne Webber (07) 4748 5507
Sunday 6 May	<b><u>Gregory Downs Canoe Race</u></b> Contact: North West Canoe Club Mt Isa Ken Glasco (President): (07) 4743 3456
Sunday 6 May	<b><u>Gregory Downs Bull Spectacular</u></b> Contact: Anne Webber (07) 4748 5507
26 & 27 May	<b><u>Burketown Campdraft and Horse Sports</u></b> Contact: Glenda & Ken Booth (07) 4745 5193
23 & 24 June	<b><u>Gregory Campdraft and Horse Sports</u></b> Contact: Sue Clarke Phone: (07) 4748 5575 Fax: (07) 4748 5670
23 September (1 <sup>st</sup> Sunday of School holidays)	<b><u>Gregory CWA Horse Sports</u></b> Contact: Sue Clarke (07) 4748 5575

# 30<sup>th</sup> WORLD BARRAMUNDI FISHING CHAMPIONSHIPS



OVER \$20,000 IN CASH, PRIZES & TROPHIES

- 1<sup>st</sup> Prize for Heaviest Barramundi \$3,000\*
- 2<sup>nd</sup> Prize for Heaviest Barramundi \$1,000
- 3<sup>rd</sup> Prize for Heaviest Barramundi \$500
- 30 Other Prizes in Categories for Open, Men, Women and Children

**\*Plus \$1,000 Gift Voucher**

Plus a BOAT, MOTOR & TRAILER Giveaway as major  
Lucky Nomination Prize as well as 30 other nomination  
draw prizes

A fun weekend  
for the whole family

held in BURKETOWN, Queensland on  
6<sup>th</sup>, 7<sup>th</sup>, 8<sup>th</sup> April 2007

*Supporting the Royal Flying Doctor Service and  
other Community Service Groups*

**Don't miss the boat for the only fishing  
competition to be at on Easter Weekend 2007**

Further information can be obtained by contacting  
Burke Shire Council on (07) 4745 5100  
or e-mail [burkesc@bigpond.com](mailto:burkesc@bigpond.com)

**PUBLIC NOTICE**  
**CYCLONE SEASON – “BE PREPARED”**

The following is provided on behalf of the Burke Shire Local Disaster Management Group for Burketown residents' information and action during the upcoming cyclone season:-

LISTEN TO YOUR RADIO (OR TV IF AVAILABLE) FOR CYCLONE UPDATES OR RING THE COUNCIL OFFICE ON 4745 5100. PLEASE NOTE THAT A WAILING SIREN BROADCAST ON YOUR RADIO OR TELEVISION MEANS THAT AN URGENT SAFETY MESSAGE IS ABOUT TO BE MADE

IN THE EVENT THAT IT IS DECIDED TO EVACUATE RESIDENTS TO CENTRALISED LOCATIONS THE FOLLOWING WILL APPLY:-

THE FIRE TRUCK WILL SOUND IT'S SIREN THROUGH THE STREETS TO INDICATE THAT IT IS RECOMMENDED THAT ALL RESIDENTS SHOULD MAKE THEIR WAY TO THE FOLLOWING CENTRAL AREAS (IF YOU NEED ASSISTANCE TO DO THIS PLEASE CONTACT THE COUNCIL OFFICE).

THESE LOCATIONS ARE THE COUNCIL BUILDING, SCHOOL TOILET BLOCK AND THE POLICE “LOCK UP” (IF YOU ARE ON MEDICATION PLEASE GO TO THE COUNCIL OFFICE AS THE HEALTH PERSONNEL AND AMBULANCE WILL BE BASED THERE). DOGS ARE ALLOWED AT THESE AREAS BUT THEY MUST BE ON A CHAIN.

EACH CENTRE WILL HAVE A SUPERVISOR - PLEASE REPORT TO THEM ON ARRIVAL.

PLEASE BRING AN EMERGENCY KIT – IT IS SUGGESTED THAT THIS CONSIST OF A CHANGE OF CLOTHES, SOME TUCKER (DON'T FORGET BABY FOOD, MILK & DISPOSABLE NAPPIES IF NEEDED), TORCH, BLANKET & ANY TABLETS OR MEDICINE YOU MAY NEED. BEFORE LEAVING YOUR HOUSE PLEASE TURN OFF POWER AND GAS.

EACH LOCATION WILL BE EQUIPPED WITH COMMUNICATION EQUIPMENT AND BASIC SUPPLIES, INCLUDING DRINKING WATER.



**10,000 STEPS CHALLENGE**



TEAMS	DESTINATION REACHED SO FAR						
	kms	Armraynald	Floraville	Normanton	Croydon	Georgetown	Ravenshoe
Team 1—Dk Blue			Steps not submitted				
Team 2—Yellow	489						
Team 3—Red	110						
Team 4—Lime			Steps not submitted				
Team 5—Brown	487						
Team 6—Crimson			Steps not submitted				
Team 7—Orange	37						
Team 8—Purple	416						
Team 9—Grey	671						
Team 10—Green	779						
Team 11 Lt Blue			Steps not submitted				
Team 12—Pink	472						



# Burke Shire Library Author Review

## Rachel Treasure

feature author for April/May

### About – Rachel Treasure

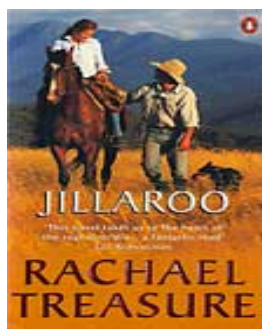
Rachael Treasure was born in Hobart in 1968 and now lives on a sheep farm in Tasmania with her husband John, her daughter Rosie, and a menagerie of farm animals including working dogs from their Castleburn kelpie and border collie stud. Rachael and John spend part of each year helping John's family with their High Country cattle operations on the Dargo High Plains in Victoria.

Rachael began her working life as a jillaroo before attending Orange Agricultural College in New South Wales. She has a BA (Communication) from Charles Sturt University, Bathurst, and was a rural journalist before becoming a full-time fiction writer. Her first TV script, *Albert's Chook Tractor*, was made into a drama for SBS TV. Her first novel, *Jillaroo*, was a Penguin bestseller, *The Stockmen* was her second novel and *The Rouseabout* is coming soon.

The following 3 books will be available for loan in April

\*Jillaroo ~ ~ \*The Stockman ~ ~ \*The Rouseabout – new release, hopefully will arrive in April

\*PLEASE NOTE: - these books will only be loaned out for a week at a time so



### Jillaroo

Author: [Treasure Rachael](#)

After a terrible argument with her father over their family property, 'Waters Meeting', Rebecca Saunders throws her swag in the ute and heads north with her three dogs. A job as a jillaroo takes her into the rowdy world of B&S balls, Bundy rum and boys. When she at last settles down to a bit of study at agricultural college, her life is turned upside down by the very handsome but very drunken party animal Charlie Lewis . . .

Will she choose a life of wheat farming on vast open plains with Charlie? Or will she return to the mountains, to fight for the land and the river that runs through her soul? It's only when tragedy shatters her world that Rebecca finds a strength and courage she never knew she had, in this action packed novel of adventure, dreams and determination.

(The above information was sourced on the Penguin Books Australia Website)



**Burke Shire Home & Community Care Program**  
**(HACC) News**



Our Burke Shire HACC clients went on a day trip to Leichhardt Falls recently and had smoko under the trees looking down to the falls. This was our first trip for this year and we hope to do more once the roads are dry and the wet is over. We still have our Centre based day care activities including having smoko, social interacting, arts & craft, reading magazines, watching videos, having a game of bingo, doing jigsaw puzzles and other activities that the clients choose to do.

Up coming events:- visit from Allied Health, meet up with Doomadgee HACC clients and planning a trip to Zinifex mine.

Amanda Douglas



**Burketown Rainfall**  
**February 2007– 170.4mm**  
**- 28 March 2007 - 127mm**

**Council Meeting Minutes**

Council meeting minutes are produced within 10 days following each Council meeting and are available free of charge to all rate payers and residents. If you are not on the mailing or emailing list for the minutes and want to be, please contact the Council office and let us know. They are also posted to our website:- [www.burkeshirecouncil.com](http://www.burkeshirecouncil.com)



**LIBRARY NEWS**

**NEW BOOKS  
ARE ON THE WAY**

**Kids**

Come in and colour in  
a Easter picture for our  
library display



Sports equipment is available for loan

*If there are any books which you would like for us to order in, send me a list and I will do my best to get them.*

**See you in the Library!**

Library Hours – 8.00am to 4.00pm weekday

*Membership for the library is free*

Jenny Williams

**2006/07 DOG REGISTRATIONS**

are now due

**Only \$2.20 per dog.**

Registration forms are  
available at the Council Office.



**HELL'S GATE ROADHOUSE IS  
CLOSED  
UNTIL FURTHER NOTICE**

**RECYCLE YOUR OLD  
MOBILE PHONES**

Burke Shire Council, as part of our Waste Management Plan, will now accept all obsolete mobile phones for recycling. For more information contact the Council office.

You can also

**RECYCLE OLD  
PRINTER CARTRIDGES**

by putting them in the box provided at  
Burketown Post Office

**TV TIMES**

*A copy of the TV Times is available  
to be picked up  
from the Council office every  
Friday after 10:00am.  
Also available on website -  
[www.ourguide.com.au](http://www.ourguide.com.au)*



**QLD RECREATIONAL FISHING  
RULES & REGULATIONS GUIDE**

is available at the Council Office and the  
Tourist Information Centre.

For more information on this guide please  
contact Caroline Dalton Ph 3225 1038  
or email: [Caline.Dalton@dpi.qld.gov.au](mailto:Caline.Dalton@dpi.qld.gov.au)

**TIDE TIME CHARTS  
ARE AVAILABLE FROM THE COUNCIL  
OFFICE OR CAN BE ACCESSED ON THE  
DPI FISHERIES WEBSITE**





# COUNCIL WORKS RELATED NEWS & ACTIVITIES



## CURRENT MAJOR WORKS

Construction of Gregory Water Supply - all mains, intake & treatment plant completed. Connections & technical aspects of plant to be completed after the wet

Upgrading & sealing of Gregory Airport - now operational - lights, fencing & shelter to be completed

Seniors Housing Development - to complete landscaping & fitout

Burketown Water Treatment Plant - complete upgrade works, including desludging of the second pond

Burketown Sewerage Treatment Plant - complete upgrade works associated with the Blivet unit

Wills Developmental Road upgrading (Main Roads/RoadTek to continue after the wet working on gravel & then seal section between Running Creek & Barkly Creek)

## FUTURE MAJOR WORKS & WORKS IN PLANNING STAGE

Gregory - Lawn Hill Road - upgrade and seal some sections (first 21km from Gregory)

Introduction of a Waste Management Plan, including recycling

Permanent repair of China Wall Culvert on Truganni Road - awaiting the final design

Albert River Boat Ramp & Pontoon - to revisit proposal

Flood damage repairs from January/March/April 2006 event

New Albert River Bridge - concept plan & design currently being drafted

Barramundi Fingerling Growout Facility - concept plan & design & costing currently being finalised

Road sealing - including, 1.5km Truganini Road, Cemetery Road & WDR at Gregory

Aquatic facility for Burketown - contract let & subject to land acquisition

Kids water play feature for Burketown - subject to funding application

## NEW PLANT & EQUIPMENT

New forklift for Depot & Workshop



## **Fire Officer**



Hello once again. It is heading towards the end of the wet season and time to start thinking about putting in early hazard mitigation fires to help protect important infrastructure around the communities. Most importantly to reduce the chance of wild fires causing damage to property later in the year when grass dries out in late winter.

The Fire Brigade in Burketown is holding training every second Monday night and the next training night will be held on the **Monday 9<sup>th</sup> April** and will be fortnightly after that. All are welcome to join in and come along to the next training night.

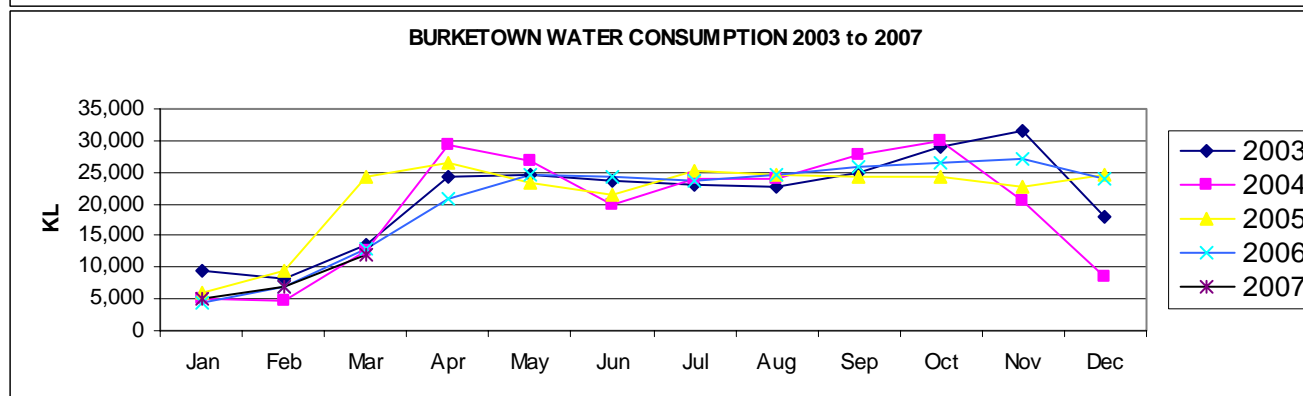
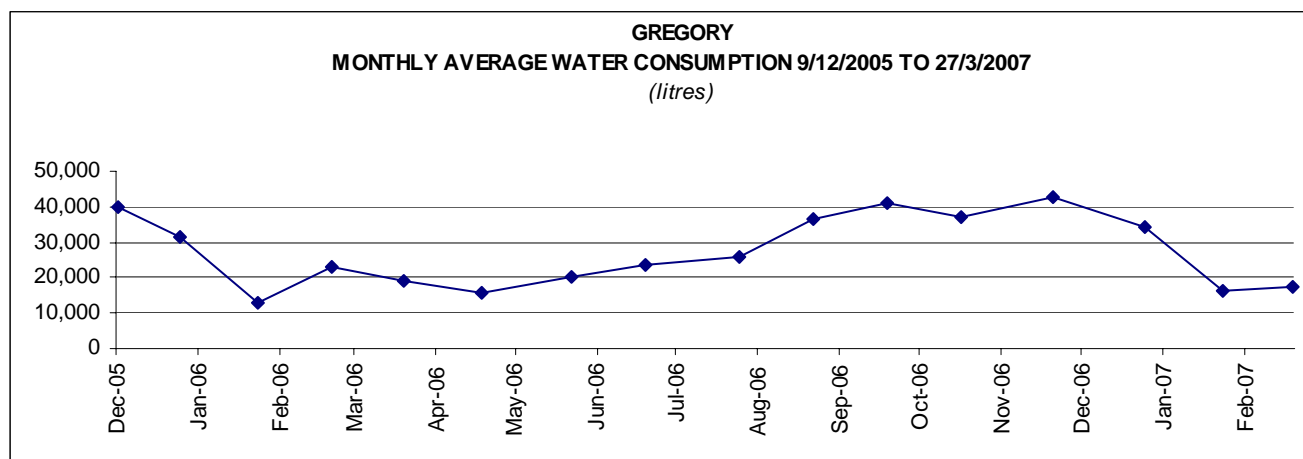
Cheers

Kevin Anderson  
Fire Project Officer  
Ph-47455132  
Fax-47455204  
Mobile-0427112073  
Sat phone-0147141322



## GREGORY WATER CONSUMPTION

Date of Reading	Average Daily Consumption Over the Month	Meter Reading
	<i>litres</i>	<i>litres</i>
28-Feb-06	22,868	1,811,953
27-Mar-06	18,966	2,324,039
26-Apr-06	15,452	2,787,609
30-May-06	20,440	3,482,576
27-Jun-06	23,630	4,144,225
1-Aug-06	25,943	5,052,241
29-Aug-06	36,766	6,081,675
26-Sep-06	41,214	7,235,668
24-Oct-06	37,297	8,279,981
28-Nov-06	42,889	9,781,079
2-Jan-07	34,533	10,989,721
31-Jan-07	16,224	11,460,205
27-Feb-07	17,491	11,932,455
27-Mar-07	23,997	12,604,379
Total Consumption		12,564,488
Average Daily Consumption		26,563



## BURKETOWN WATER CONSUMPTION (kilolitres)

Year	Jan	Feb	Mar	Apr	May	Jun	Jul	Aug	Sept	Oct	Nov	Dec	TOTAL
2003	9,319	8,173	13,696	24,222	24,614	23,518	23,092	22,661	24,888	28,854	31,575	17,894	252,506
2004	5,007	4,700	12,470	29,295	26,660	20,017	23,989	24,081	27,720	29,942	20,591	8,669	233,141
2005	5,923	9,569	24,149	26,580	23,482	21,419	25,317	24,683	24,143	24,295	22,554	24,655	256,769
2006	4,283	6,876	12,879	20,685	24,684	24,267	23,567	24,582	25,796	26,500	26,500	24,000	245,119
2007	5,000	7,000	12,000										24,000

Consumption for October, November & December 2006 and January 2007 are estimates only

## **PUBLIC NOTICE**

### **SCHEDULE OF ORDINARY MEETINGS FOR 2007**

Pursuant to Section 464 (1) of the *Local Government Act 1993*, the following is a schedule of dates for the remaining Ordinary Meetings of the Burke Shire Council for the year 2007:-

Thursday 12 April 2007  
Thursday 17 May 2007  
Thursday 21 June 2007  
Thursday 19 July 2007  
Thursday 16 August 2007  
Thursday 20 September 2007  
Thursday 18 October 2007  
Thursday 15 November 2007  
Thursday 13 December 2007

All meetings are to be held in the Council Chamber in the Shire Office, Musgrave Street, Burketown, and are scheduled to commence at 9:00am.

# **Burketown Health Centre**

## **POSITION VACANT**

Operational Officer - Full time  
Health Worker—Full Time  
Administration Officer— 20 Hrs/week

## **VISITING SERVICES**

**Optometrist** - 20 April (appointments only)  
Make appointment at Clinic Ph: 47455133  
You will need *Medicare Card & Concession Card*

**Psychologist - Occupational Therapist - Speech Therapist**  
Burketown - 14 & 15 May 2007  
25 & 26 June 2007  
Gregory - 2 & 3 April 2007

**Dietitian - Physiotherapist - Podiatrist**  
Burketown - 23 & 24 April 2007  
4 & 5 June 2007  
Gregory - 6 June 2007

Influenza Vaccinations & Pneumovax Vaccinations *now available!*

# Police Beat

From Wednesday the 14<sup>th</sup> to Saturday the 17<sup>th</sup> March I had the great pleasure in travelling to Croydon for the Gulf area touch football competition. All of the kids played very well and with a great spirit of sportsmanship and fairness and should be congratulated. The event was extremely well organised and congratulations must go out to Jacquie, Rachael, Jane and Jackie as well as all the players and supporters. I look forward to it next year, hopefully without the flooding rain.

Weather permitting the Barramundi competition will be held over the Easter weekend. Once again our friends from the Mt Isa traffic branch will be around so please be mindful of all aspects of road safety. If anyone needs to register their car, boat or trailer please come and see me at the station, same applies to renewing your licenses. Please be mindful that there will be an influx of tourists in town and especially on the water ways. The 0.05% alcohol limit also applies on the water when driving a boat. I wish everyone the best if you are in the competition and I may even wet a line, although as you know I am no real threat to the scorers!

As from the 26<sup>th</sup> March, there will be a changing of owners of the pub. Jeff Bambick will take up residence as the new owner/manager so please make him and his family welcome into Burketown.

Unfortunately there have been no applicants for Jim's vacant position and relieving staff from Mt Isa are to be rotated through until the position is filled. Matt Hogan will be here up to June/July or until the position is filled.

Stay safe

Paul GRIFFITHS  
Sergeant  
OIC Burketown Police



## VMR NEWS

G'day all,

VMR is going from strength to strength with new members participating in meetings and also on the water, but we can always use more active members so if your interested come and see me anytime.

We are now opening at 7.00 pm every Friday night with a sausage sizzle and a few drinks.

Next Friday the 30<sup>th</sup> of March will be our monthly meeting for April at 6:30 pm for all interested parties with the evenings activities (drinking) following.

We are looking for any members keen to complete a full open water coxswain's ticket which will soon be compulsory to operate our vessel on any rescue. If you are interested please contact myself or Paul Poole. We don't have a firm date yet but the 12 day course is to be run before the 30<sup>th</sup> of June.

It only costs \$3.50/ year to become a member so come and join in and remember our motto "Drinking for a cause".

Hooroo



# TENNIS



## Burketown Results up to Round 2

Blue	Brandon, Kenny, Kelly, Koodie	6 (includes bye)
Yellow	Moogs, Davo, Tonya, Glenda	10
Orange	Pete, Zac, Rachel, Sharon	12
Red	Jeremy, Kevin, Jenny, Sarah	8
Purple	Laurie, Col, Janet, Jacqui W	14
Pink	David, Mudgy, Amanda, Gabe	8 (yet to play round 1)
Green	Matt, Merg, Jaqui Y, Leonie	8 (yet to play round 1)
Grey	Min, Oliver, Shea, Leonie	10
Brown	Greg, Paul, Cheryl, Katrina	8 (includes bye)

Win = 4pts

Loss = 2pts

Forfeit = 0pts

Bye = 0pts

## FUNDRAISER

*For Sale*

### ***African Mahogany Seedlings***

**\$5.00 for 1**

**\$10.00 for 3**

Proceeds for School of the Air Year 7 trip to Canberra

Call Bridget Clarke ph: 4748 5575

## BEACH CRICKET

**Mayday Weekend 5—7 May**

For details contact—John Clarke Ph: 4748 5575

Anne Webber Ph: 4748 5507



## **SUNDAY SCHOOL & NIGHT GOSPEL MEETINGS**

**BURKETOWN CHURCH**

**FEBRUARY & MARCH 2007**

### **Dates**

- 22 April 2007
- 6 May 2007

### **Times**

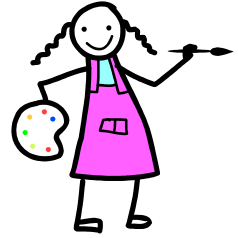
*Sunday School 9:30am*  
*Night Gospel 7:30pm - Summer*

### **Contact**

*Doug & Faye Jones*  
*Ph: (07) 4745 5058*



# Kindy News



We would like to Thank;

- Burke Shire Council (for funding the renovations to our kitchen)
- Harry and Trevor (for the yard maintenance of the Kindergarten in 2007), as well as
- Everyone that supported our 'Pancake Day' fundraiser

Burke Shire Council has generously funded the renovations to the Kindergarten Kitchen. We have already received a new refrigerator, and the first new stove since the building was erected. We have also received new appliances, utensils and storage equipment to fully deck out the new kitchen. We would like to thank all of the people who have been involved in this venture. We really do appreciate the effort you have put in, as well as your tremendous support.

Thank you to Harry and Trevor, who (in their own time) have ensured the maintenance of the yard at the Kindergarten. This has allowed the children to safely play outside.

Lastly, thank you to Burketown Community for supporting our 'Pancake day' fundraiser. We raised \$224 from the sale of pancakes (plus donations), which has been used to order a quality saucepan set (including cooking utensils, knife set, cutting board, measuring spoons & cups) as well as a blender.

We appreciate the efforts of everyone in helping us to improve the Kindergarten and ultimately the future learning experiences of the children.

Thanks and Kind Regards

Sarah Stevens

(Director/Teacher Burketown Kindergarten)

## COUNCIL AUCTION

Obsolete/Surplus Goods & Minor Plant Equipment

8:00am 28 April 2007

at Burketown Council Depot

## Woodslake Restoration Project

The Carpentaria Land Council Aboriginal Corporation is in the process of preparing an Envirofund application through the Department of Environment and Water (previously the Department of Environment and Heritage), for funding to restore Woodslake to its natural ecological conditions. The project aims to increase the depth of the lake system by excavation of the lake bottom; prevent further siltation via runoff from upstream waterways transporting sediment into the lake; revegetate the foreshore; eradicate any weeds adjacent to the lake; fill erosion areas and revegetate and fence off the lake to prevent stock and feral animals entering the lake itself.

The project is being heavily supported by Burke Shire Council who has pledged to assist with the provision of machinery and operators to conduct the excavation works.

The Envirofund programme is designed to encourage volunteer community participation and we hope to see many of you lend a hand when the opportunities arise.

For further information in regards to this project, or to volunteer your time, please feel free to contact Kelly Gardner of the CLCAC on 4745 5132.



## BURKETOWN CARAVAN PARK MINI FISHING COMPETITION RESULTS 10 March 2007

<u>Seniors</u>			
Category	Winner	Size	Weight
Barramundi	1st Clinton Murray	112cm	11.5kg
	2nd Col Baker	82cm	5.18kg
	3rd Steve Booth	80cm	4.16kg
Salmon	David Booth Snr	79cm	2.64
Jew	David Marshall	102cm	6.94kg
Grunter	Greg Portch	52cm	1.50kg
Bream	Greg Portch	36cm	.80kg
Cherbin	None caught	Drawn - Laurie Portch	
Most creative Rod & Reel Combo -		Jo Baker	
Most creative Lure -		Janet Creighton	
Name Your Favorite Fishing Spot -		Mary Cox—Frustration Point	
<u>Juniors</u>			
Barramundi	John Smith Jnr	89cm	5.96kg
	Dakota Major	80cm	4.58kg
	Sage Marshall	73cm	3.44kg
Salmon	Jayden Douglas	68cm	1.62kg
Jew	None caught	Drawn - Jneille Portch	
Grunter	Sage Marshall	41cm	.76kg
Bream	Cobe Marshall	29cm	.44
Cherbin	Shakiah Douglas	20cm	.06
Name Your Favorite Fishing Spot -		Tre Yanner	
Most Creative Lure -		Tre Yanner	



Dakota Major



Liam, Jarrod, Connor & John Smith



Clinton Murray



# Burketown Vacation Care



Thank you to the children who helped  
make the above banner for Linda.

Held from 10 to 13

April 2007

Closed for lunch

*Located at the  
Shire Hall*

*Further details phone  
GSRRA Inc 4745 1010*

URATE. GAMES. PAINTING. SPORT

**Come  
&  
Enjoy,**

Jade will be  
back and  
Linda will be  
showing you  
how to make  
a horse and  
cowboy,  
a soldier  
and your  
favourite,  
Cooking.

# Australia Gulf of Carpentaria—Karumba

APRIL		MAY		JUNE	
Time m	Time m	Time m	Time m	Time m	Time m
1 0755 1.37 1818 3.21 SU	16 0756 1.42 1739 2.82 MO	1 0028 1.52 0950 2.27 TU 1153 2.25 ★ 1624 2.29	16 0638 2.56 2144 1.12 WE	1 0815 3.11 2158 0.88 FR	16 0810 3.67 2212 0.23 SA
2 0803 1.71 1833 2.97 MO	17 0152 1.97 0514 2.02 TU 0914 1.88 ● 1812 2.37	2 0035 1.44 0911 2.59 WE ○	17 0730 3.05 2143 0.84 TH ●	2 0844 3.25 2228 0.77 SA	17 0904 3.77 2302 0.16 SU
3 0344 1.92 1850 2.72 TU ○	18 0056 1.89 0711 2.46 WE 2312 1.71	3 0042 1.44 0916 2.87 TH 2247 1.40	18 0820 3.45 2203 0.60 FR	3 0921 3.34 2312 0.64 SU	18 0957 3.75 2352 0.16 MO
4 0249 1.85 1115 2.46 WE 1517 2.32 1908 2.45	19 0829 2.94 2240 1.35 TH	4 0929 3.09 2240 1.23 FR	19 0911 3.73 2249 0.43 SA	4 1002 3.41 1045 3.45 MO	19 1045 3.65 1127 3.48 TU
5 0256 1.79 1100 2.74 TH	20 0928 3.38 2300 1.02 FR	5 0950 3.26 2302 1.06 SA	20 1002 3.87 2346 0.34 SU	5 0001 0.52 1045 3.45 TU	20 0039 0.22 1127 3.48 WE
6 0304 1.78 1059 2.99 FR 2358 1.66	21 1019 3.73 2347 0.78 SA	6 1017 3.40 2345 0.90 SU	21 1053 3.90 1141 3.81 MO	6 0052 0.42 1127 3.45 WE	21 0121 0.36 1157 3.25 TH
7 1107 3.23 SA	22 1108 3.95 SU	7 1052 3.51 1141 3.81 MO	22 0045 0.31 1141 3.81 TU	7 0143 0.39 1203 3.39 TH	22 0155 0.61 1212 3.00 FR ●
8 0017 1.42 1128 3.44 SU	23 0047 0.64 1157 4.03 MO	8 0041 0.76 1130 3.58 TU	23 0143 0.34 1223 3.65 WE	8 0230 0.45 1233 3.24 FR ●	23 0206 0.93 1219 2.75 SA 2231 1.14
9 0053 1.20 1157 3.62 MO	24 0152 0.56 1245 3.99 TU ●	9 0140 0.63 1212 3.60 WE	24 0238 0.44 1257 3.43 TH ●	9 0317 0.65 1257 2.98 SA	24 1224 2.50 2053 1.01 SU
10 0144 1.01 1234 3.74 TU	25 0300 0.55 1330 3.84 WE	10 0240 0.55 1253 3.56 TH ●	25 0326 0.64 1320 3.17 FR	10 0410 1.00 1312 2.64 SU 2202 1.30	25 1202 2.25 2055 0.86 MO
11 0245 0.86 1318 3.79 WE ●	26 0405 0.61 1415 3.63 TH	11 0340 0.56 1333 3.43 FR	26 0356 0.94 1337 2.91 SA	11 0330 1.49 0522 1.47 MO 1304 2.25 2118 1.16	26 0555 2.26 2100 0.79 TU
12 0354 0.75 1408 3.76 TH	27 0500 0.76 1452 3.37 FR	12 0438 0.70 1412 3.20 SA	27 0045 1.27 1351 2.64 SU 2240 1.23	12 0446 2.04 0959 1.94 TU 1140 1.95 2047 0.97	27 0606 2.61 2053 0.77 WE
13 0506 0.73 1502 3.66 FR	28 0541 1.03 1522 3.10 SA	13 0532 1.01 1445 2.86 SU	28 1346 2.37 2233 1.10 MO	13 0537 2.60 2044 0.73 WE	28 0630 2.89 2050 0.72 TH
14 0608 0.82 1559 3.47 SA	29 0557 1.38 1546 2.83 SU	14 0630 1.45 1505 2.44 MO 2306 1.52	29 0757 2.27 2241 1.03 TU	14 0626 3.08 2058 0.52 TH	29 0659 3.10 2110 0.64 FR
15 0702 1.05 1652 3.19 SU	30 0153 1.60 1610 2.56 MO	15 0533 2.01 0825 1.96 TU 1358 2.04 2218 1.38	30 0743 2.62 2221 1.03 WE	15 0716 3.45 2128 0.35 FR ●	30 0736 3.24 2147 0.54 SA ○
		31 0754 2.90 2152 0.98 TH			

© Copyright Commonwealth of Australia 2005

Bureau of Meteorology

National Tidal Centre

Datum of Predictions is Lowest Astronomical Tide

Moon Symbols

● New Moon

○ First Quarter

○ Full Moon

● Last Quarter

**Note !!!**

**For Burketown Tide times add the following**

AND BOATIN:

1 hour mouth of Albert River

4 hours for Jetty

5 hours for bridge

193 I