

# Burke Shire Council Newsletter



Edition 32 : September 2011

## Fossil Find at Floraville

At the commencement of the June school holidays an intrepid group of palaeontologists from UNSW, Qld Uni, students, university staff and experienced field assistants descended upon Floraville to commence a dig to complete the uncovering of the bones of a Diprotodon that were discovered towards the end of their trip the year before. Local children and community members as well as a student and teacher from Spinifex College in Mt Isa also assisted in the uncovering of the bones.

Their hopes for a near complete skeleton were realised as their sweat and digging and chipping revealed bone after bone including the often elusive complete skull. (Skulls are hard to find because as the head was approx 1/3 of the total body length and the animal so huge the bones were light and large sinus cavities ran the length of the skull in order to reduce the weight of the head and so they deteriorate easily.)

Diprotodons were megafauna that lived in the Pleistocene era over 50 000 years ago (a younger era than the majority of finds at Riversleigh). They were grass eaters and roamed in herds across the plains. They were similar to the wombats of modern day but resembled the modern day hippo or rhino in size and bulk.

The specimen found was a very old animal as all the teeth had been worn down. Mixed in with the fossil find were the teeth of Megalania - an enormous goanna over 5m in length - that was possibly feasting on the dead diprotodon when it too, for reasons unknown, perished.

Other specimens of animals from that era - Zygomaturus (another diprotodon), Palorchestes (a tapir like creature the size of a large cow), Procoptodon (giant kangaroo taller than a man), Megalania, crocodile, bats, large snakes (over 5m



long), dunnarts, mice and turtle have all been found at Floraville over the last 40 years.

The find is significant because not only is it the northernmost found specimen but finding complete (or close to complete) skeletons is very rare. The carcasses of these animals were often scavenged upon and the bones scattered and then spread by floods or destroyed by exposure to the elements.

While not all bones were retrieved, partially due to time constraints and the amount of overburden at the site, the majority of the skeleton has been found. A complete specimen

allows for much more accurate studies and conclusions to be drawn.

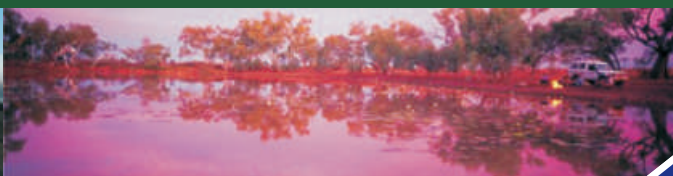
The bones were painstakingly removed, labelled and if necessary placed in protecting plaster casting for the journey to the Riversleigh Centre in Mt Isa where they will be cleaned and prepared for further study. Samples were also taken at the site in order to try and determine the age of the find.

The team is grateful the generous assistance from all at Floraville, local businesses and the support of the Xstrata Community Partnership Funding.

**Burke Shire Council PO Box 90 BURKETOWN QLD 4830**

**Phone: 07 4745 5100 Fax: 07 4745 5181 email: [office@burke.qld.gov.au](mailto:office@burke.qld.gov.au) website: [burkeshirecouncil.com](http://burkeshirecouncil.com)**

*Images courtesy of Burke Shire Council, Tourism Queensland and various local photographers.*



Proudly brought to you by:



# Message from the Mayor

## COMMUNITY PLAN UPDATE

Our community plan process will soon be up and running. You might recall an article in the last BSC Newsletter announcing that Council is obliged to conduct a Community Planning process as part of the development for the future of the Shire.

We will be contacting and inviting all the community including service providers, contractors and visitors. I can't encourage you too strongly to take part in the process so that

your thoughts, ideas and dreams for the Shire are captured and incorporated into the plan within the Shire's financial capacity to do so.

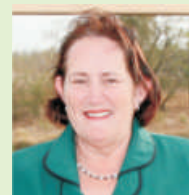
Our children should be helped to put their ideas into the process as their future is tied up in our ability to move the Shire forward with sustainable economic development.

A facilitator, Tracy Holt, Councillors and Staff will soon be around conducting sessions which we hope many will be able to attend. This will not be the only opportunity for your contribution. Your

information can be put up onto a website developed specifically for the Community Plan; if you would like an individual session Council staff will be available to assist you either face to face or by phone.

Paperwork will sent out through letterbox drops as well so there are many ways and several opportunities for you to have your say.

*Mayor Annie Clarke*



# Message from the Deputy Mayor Ernie Camp

Dry season work seems to be intensifying both for businesses and Council. The late Wet has shortened the time available to us to do all we have to before rain starts again.

I was privileged to attend the Arts and Craft Show – we certainly have some talented people and good cooks in our community – and presented awards to the various winners on the day. I was also able to attend the official unveiling of the two public art pieces commissioned by the RADF committee. No doubt you will have seen these pieces as you have made your way around town and agree with me that they look great!

Coming up at the end of August is a Beef and Roads

forum in Cloncurry. I will be attending and speaking at this forum. Given the recent events involving agriculture the forum is timely as we seek to consolidate and protect industries of long standing in the North West. I have also had the pleasure of being accepted as a member of the Riversleigh Community and Scientific Advisory Committee which seeks to protect this wonderful piece of history and educate the public.

Natural history is something I am very interested in and so I am quite excited to be presented with this opportunity. The recent Flamenco Fire evening was very enjoyable and a rare cultural experience for Burke Shire.

There are still plenty of events to come in our Shire – Horse Sports at Gregory, Campdraft at Burketown, Seniors Week celebrations and a Quiz night fundraiser for Gregory School – I hope to see you enjoying yourself at these functions and supporting the community members who work tirelessly to make them happen.

By the time you receive this newsletter you will be aware of the consultation for the Community Plan.

I encourage you to put forward your comments and ideas as these will shape the future direction of the Shire.



# Message from Councillor

*Tracy Forshaw*

Hi Everyone,

The year is nearly three-quarters through, and shortly the kids will be home from school holidays and getting ready to do their Christmas shopping.

The Council Crews have been working very hard and bringing the Shire and Main Roads back up to a good standard. In this very busy time please drive safely especially with all the extra traffic on the roads.

I attended the Community Plan meetings at Adel's Grove and Gregory and we had a wonderful turn-up and some really good ideas. The draft plan will be sent out and everyone will have the opportunity to comment on it. Without this Community Plan, Council and our local volunteer groups and associations will not be able to access any State Government funding – this includes the Gaming Fund, so that is why we had to do the plan. I hope to see you at either the QCWA Gregory Horse Sports or the Burketown Campdraft & Horse Sports.

*Take care, regards Cr Tracy Forshaw*



# Message from Councillor

*Bill Olive*

The Road Works around the region seem to be coming along nicely with everything on track for the approaching wet season.

I would like to thank the members of the workforce for their good efforts and hard work on the roads as these repairs are imperative for all those travelling on our roads, as I and wife Leona know all too well.

It seems the year has passed all too fast and I find myself extremely busy as we hit the last three months of 2011.

I urge those who may have forgotten about the Satellite Subsidy Scheme Digital TV Switchover to remember to register either online or by phone before 2 October 2011 to take advantage on the government subsidy.

Although you may have a digital ready TV you also need a satellite installed and with Christmas fast approaching it would be a shame to be hit for the full cost of this instalment!

*Regards, Cr Bob Olive*



# Message from Councillor

*Tonya Murray*

Hello again everyone,

We've just come into the wonderful weather of spring and it's great to see so much happening around the place. Congratulations to everyone involved in the success of the 2011 Arts & Crafts show and the Gregory Campdraft – credits go to the many volunteers that work hard to provide a good time for all.

The Burketown Campdraft is also coming up from the 30th September – 2 October so hopefully we'll see you all there. Many of you would have received information now about the development of the Burke Shire Community Plan or attended one of the Community Forums held at Burketown, Gregory and Adels Grove.

I really encourage you all to have your say by completing and returning the survey forms to Council.

This plan will outline how we see our shire and it's communities in the next 10 years or more so please tell us what you would like to see included and together we can plan for our future.

I hope everyone enjoys the upcoming school holidays and motorists please be mindful of the children that will be out and about a bit more during this break.

*Take Care, Cr Tonya Murray*





## Message from the **CEO** Gary Letts

To continue on with progress, our Community Plan is ready to be launched with the facilitation in sectors of the community on where we as community wish to be directed for the next ten years.

Our administration and corporate sector of the Council have been busy going through the processes of our annual report being constructed, the budget for the Council for the next twelve months.

The dry season is upon us with the roads reconstruction from the floods and this year's approach is to build a better quality of roads which will hold up in flooding. As any community member travels across the road systems from one end of the shire one can see activities of road construction, so take care on approaching road works as prevailing conditions may change.

The whole area, through no fault of their own has been affected by the live cattle export saga imposed on the cattle industry but rural people are resilient. The outcome will be economically difficult to come out of for some over the next season, will show the resilience of the cattle producers and the support industry and I applaud the rural community on the fighting spirit.

There will be a Roads and Beef Forum in Cloncurry at the end of August, which is a great opportunity for members of the cattle industry to attend and participate.

Over the past three months councillors have represented the Burke Shire at conferences and workshops, enabling the Council to be well informed in trends and developments from various forms of government bodies and representations.

Our Arts n Craft show was well attended and well submitted with a lovely exhibition of crafts and art in all sections a thank you for all the people who took the time to bake, sew, knit, paint and photograph and garden to make the day a success as well as the community people who loaned stock for the animal nursery. The event auction was fun and \$754.00 was raised for charities. Well done to all who participated in the day.

Burketown and Gregory had the service of the Vet from Mt Isa who was kept busy with minor procedures and health checks on animals, the service was well received by the public and the Burke Shire are to be congratulated on its initiative to promote animal care in the community.

The area has experienced a lot of tourists either camping in the caravan park or at the surrounds of the river and areas. We will soon be experiencing the Morning Glory followers to view the unique climatic feature in the Gulf this event draws visitors from all over Australia and overseas. This event only happens in the Gulf of Carpentaria and the Gulf of Mexico, and hopefully this year we experience a better climatic occurrence than last year.

Our area is also very fortunate to have a significant discovery of a complete and rare fossil of a diprotodont, over the last school break, archaeologists virtually stumble across the fossil. This find will be great for the future of digs in the area.

The Shire has had a visit from our building and planning consultants with inspections of properties with construction or renovations in progress our consultants were able to assist any members of the public in their applications for development or renovations and new structures. For any people or organisation intending to commence any form of construction a processes is required to be followed with sections of the building act.



## Engineering Round Up

Council has an enormous engineering works program, as of the 31st of August road works are of the highest priority trying to gain maximum output from the available resources, a budget of \$36m of predominantly Flood Damage restoration is well advanced with approximately \$12m or 30% completed.

A further budget of \$4m of maintenance activities is spread over the roads, weeds, pests, water, sewerage, aerodromes and other utilities for the 12 months span of the current budget.

A Capital Works Program of approximately \$2.5m is programmed this includes extensions to housing, water, sewerage, solar electricity, sporting facilities, towns beautification, cemetery documentation including burial register grave restoration development, GIS mapping including urban and rural addressing implementation, wet season road side river flooding safety signage, sewerage installation to Kindergarten and Landsborough street.

The machinery supporting the works that this program demands has an expected expenditure for new machinery of approximately \$2m.

### Summary of current activities and resources:

Gravel re-sheeting currently a works in progress are Gregory Camooweal, Gregory Lawn, Lawn Hill National Park, Escott, Bowthorn, Morella, Doomadgee Lawn Hill, Truganini, and Burketown Dump roads.

Gravel resheeting to commence over the

next month are Doomadgee West, Nudgaburra, Riversleigh and further resheeting on Doomadgee to Lawn Hill roads.

Doomadgee East road 8kms of the missing link upgrade to bitumen is now completed, and Gregory Lawn Hill road from the Mine Turn Off to Big Archie Creek upgrade to bitumen is under construction.

Council currently has over 50 Machinery Contractors with various items of plant maximising the current dry season conditions for construction and maintenance.

Community lifestyle improvement projects, completed are multipurpose courts & aquatic centre lighting, commencement of handball hit up wall at Burketown, resurfacing of the tennis courts at Gregory.

Current conceptual design works are progressing with the multipurpose chambers, art gallery, offices & function rooms, also concept design of the Morning Glory park water feature and park walking trail.

Planned community lifestyle improvement projects for the current dry season are BBQ & picnic shelter Gregory park, solar lighting Gregory amenities block, Burketown & Gregory place branding (town welcome signs) and street banners Burketown & Gregory, assistance with analogue to digital TV changeover, concept design works for a wharf at the Old Albert Bridge, and a similar project for a safe water marina design at the Truganini boat ramp.

## Police Beat...

The new Driver's Licenses from Queensland Transport are coming on line throughout the state. We have been informed by Queensland Transport that we will be connected to the new system in late October. All those attending for a license after this time will be issued with the new Queensland Driver's License.

We have also taken possession of an Intoxyliser at the station. This means that we will be able to process drink drivers in Burketown at the station. Previously if we intercepted a drink driver we had to take a trip to Doomadgee.

In relation to drink driving if you are sitting in the passenger seat supervising a Learner driver and you are over the limit you will be charged with being "in charge" of the vehicle whilst over the limit. The penalty handed out by the court is the same as if you were driving the vehicle.

From 1 July 2010, the no alcohol limit (0.00) changed and applies to the following (regardless of age):

- all learner license holders
- all license holders learning to drive the next higher class of license under the authority of their provisional, probationary or open license
- all provisional, probationary and restricted license holders
- all class RE motorbike license holders for the first 12 months of holding their class RE motorbike provisional, probationary or open license
- all class RE motorbike license holders learning to ride a class R motorbike under the authority of their class RE provisional, probationary and open license
- all license holders driving tractors and specially constructed vehicles.

A 52 metre long fishing net was recently removed from Pandanas Creek, it belongs to a professional fisherman and he has offered a reward for its return and information leading to the prosecution of the person/s responsible for taking it. Any information can be passed onto the Burketown Police Station or by phoning Crime Stoppers on 1800 333 000.

Wayne Rickerby, Burketown Police

# Home & Community Care Update

Both our day trips to Sweers Island were a huge success with lots of fish being caught on both occasions. Those that caught many shared their catch with those that weren't so lucky.

As usual, we were picked up from the air-strip by Tex and Mick and taken to the Lodge where the ladies had a morning tea waiting for us before we were driven onto the beach for our fishing adventure.

It wasn't all fishing though as we were privy to watching the salvaging of a fishing boat on our first trip. The second was more dramatic with a huge shark surfacing within a few feet of us while we were fishing and going into a feeding frenzy. It was a toss-up as to who would hook him first although I think George was hoping that it would favor his line.

The Arts and Crafts Show saw several of our clients win various prizes in the Needlework Section. Vi Booth, Elva Portch, Bonnie Smith, Maisie Anderson and Annie Baker all entered and produced some beautiful handcrafts, such as tapestry, fancywork, crochet, sewing and knitting.

Prior to the Show the HACC clients had a "special" morning tea where they were entertained by Wayne Sullivan. The entertainer for the Show, he interacted with the clients and sang several songs for them mainly country with George joining in on several and accompanying him with the spoons.

In July we held a Trash and Treasure which was a huge success with the money raised going towards our Drovers Camp at Camooweal from the 25th to 29th August. This year will see George's portrait hung in the Drovers Hall of Fame so it will be a special trip for everyone, certainly George.

We have finally finished the raised Garden Beds at the Old Church/Community Hall. The clients were all keen on getting started and helped with the planting of their selected plants and herbs. The two seats are yet to be bolted down to the front patio to complete the Project before we have the opening which is part of the Garden Project.

Our grateful thanks to all who made this possible and helped with the building of the garden beds, the garden seats, and the soil delivery. To complete this project there will be a Morning Tea to officially open the gardens, the date yet to be decided.

On September 1st we are holding a Disability Tea in the Morning Glory Park to bring Awareness to Disability and the introduction to the National Disability Insurance Scheme. The Government has recently announced that they share the vision for a National Disability Insurance Scheme and will begin laying the foundations for its introduction. This is a great opportunity to show your support by joining us in the park for morning tea.

## REMINDER of YOUR RIGHTS and RESPONSIBILITIES:

**As a HACC client you have the right to:** 1. Be treated with respect and dignity. Service should be responsive to your social, cultural and physical needs. 2. Be informed and consulted. 3. Be part of decisions about your care. 4. Receive quality service. 5. Privacy and confidentiality. 6. An advocate. 7. Make a complaint.

## YOUR RESPONSIBILITIES TO THE PEOPLE PROVIDING YOUR CARE:

**As a service user your responsibilities are to:**

1. Treat staff and volunteers with respect and courtesy. 2. Act in a way that respects the rights of other clients and service staff. 3. Take responsibility for the results of any decisions which you may make with staff about your care. 4. Be aware of the service you are receiving and the limitations of that service.

## Clinic News

### A REMINDER TO ALL COMMUNITY MEMBERS:

The end of the year is fast approaching with only a couple of months remaining before New Year!

Have you remembered to have your regular medical check-ups?

Don't forget to ensure your RFDS medical check-ups are up to date before the wet season.

For more information, or to make an appointment please contact Di Phillips at the Clinic on 07 4745 5133.



## Library News...

### Sports Library

The sports Library has a selection of pool kickboards, these items will be at the council office to be borrowed then returned after use.

### Junior Library members

DVD'S are available for viewing after school hours.

### DVD of the Month:



*"A big thank you to everyone who returned their overdue books."*

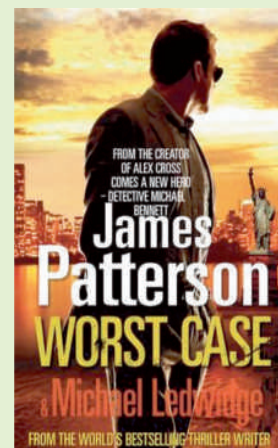
### Bolt

For super-dog Bolt, every day is filled with adventure, danger and intrigue - at least until the cameras stop rolling. When the canine star of a hit TV show is accidentally shipped from his Hollywood soundstage to New York City, he begins his biggest adventure yet - a cross-country journey through the real world...

### Adult Fiction Book of the Month

#### James Patterson - Worst Case

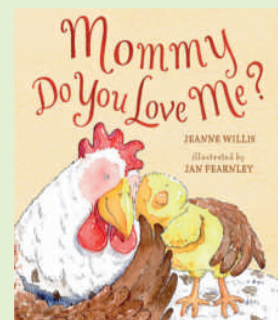
The son of one of New York's wealthiest families is snatched off the streets and held hostage. His parents can't save him, because this kidnapper isn't determined money. Instead, he quizzes his prisoner on the price others pay for his life of luxury. In this exam, wrong answers are fatal...



### Kids Corner Book of the Month

#### Mummy Do You Love Me?

It doesn't matter if the little duck is splashing in the mud or shouting his head off - Mummy still loves him...





# school updates page...

## Gregory School

Students and staff at the Gregory Educational Facility have been very busy throughout term 3. Students have been continuing in their development of literacy and numeracy skills.

A recent addition to engage students in literacy and numeracy is the implementation of XO's which comes under One Laptop Per Child (OLPC) organisation. Students have been having an exciting time using these devices in their lessons.

We have also been enjoying utilising the Gregory Downs Community Oval for our daily Smart Moves and HPE lessons.



## Burketown State School

On the 18th of August Burketown State School officially opened the new library/ resource building. The opening was attended by former Burketown State School students, parents and community members.

Murrando Yanner started the proceedings with a welcome to country speech followed by our school captains Tyrone Cooling, Maali Yanner and Mayarr Yanner all doing speeches.

The ribbon was cut by Miss Vi Booth to officially open the building. Students, parents and community members then inspected the new building, followed by a big morning tea.

## Kindy Kapers



### POSITION VACANT – Burketown Kindergarten

A vacancy exists for a Qualified Early Childhood Teacher (4 Year Trained) to commence in Term 1, 2012. Position is currently Monday to Wednesday (22.5 hours). **Applicants must have:**

- Bachelor of Education (Early Childhood)
- Current Blue Card
- Senior First Aid Certificate

To register your interest or email your resume please contact Cheryl Portch (President) on [burke.kindy@bigpond.com](mailto:burke.kindy@bigpond.com) or phone 0428 578 442.

## Vacation Care...

Last July the Burketown vacation program drove to Karumba and Normanton to partake in a week long Hockey Sport/ Fun/ just living Program...

It was well enjoyed by the children and benefited their team and sportsmanship skills. This Vacation program for the September School Holidays will be organised and run by Laylee Armstrong.

Children will be offered a chance to come and have fun, learn new things and enjoy the company of others. The special program for the September Vacation period will be LEARN TO SWIM each day.

The program will have special guests to teach and introduce swimming to the children. Please ensure that each child has all the necessary paperwork completed.

Vacation care will be \$2.00 per day per child and will be held at the Burketown Kindy. If you have any queries or require more information please call Mike Stevenson on 0488 451 715.





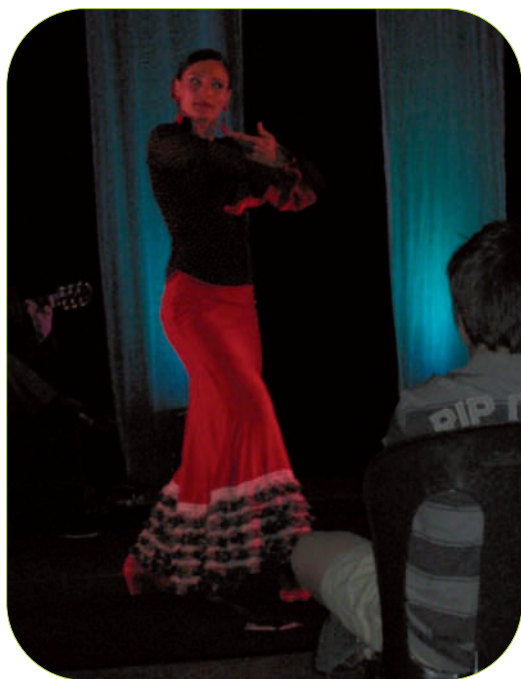
## Burketown State School 2011 Sports Carnival



## Artour Flamenco Fire Primavera Mia

On Tuesday 9th August 2011 the Flamenco Fire Primavera Mia presented their talented dance group to the community of Burke Shire.

This community event is one of the first in the Burke Shire and received a great attendance. Community members gathered from the ages of 6 months to 80 years old to cast their eyes on the mesmerising dancers upon their bright coloured stage and backdrop. It was a great opportunity for everyone to experience and we greatly enjoyed the world class performance.



## New Tourist Information Brochure for Burke Shire

Council is currently in the stages of updating the Tourist Information Brochure for the Burke Shire region. This information brochure will showcase to tourists the services and attractions that we as a Community have to offer.

If you are interested in showcasing your Business, Service or Attraction fill in the inserted form return it to your Community Officer via emailing [co@burke.qld.gov.au](mailto:co@burke.qld.gov.au), fax to 07 4745 5181, hand into the Administration Office on Musgrave Street or post to PO Box 90 Burketown, QLD 4830.

If you require any further information feel free to contact your Community Officer Stephanie Wade via emailing the above address or phoning 07 4745 5100.

## Free Ambulance Cover

From 1st July 2011, Queenslanders will no longer be required to pay the Community Ambulance Cover Levy saving \$113 on your electricity bill. All Queensland residents will now enjoy free ambulance cover throughout Australia and those exempt from the levy will continue to receive this service free.

The Government will now fund the cost of the Ambulance service through its annual budget. If you are concerned the levy has been charged for days after the 20 June 2011 contact your electricity retailer or electricity provider.

For more information visit: [www.ambulancecover.qld.gov.au](http://www.ambulancecover.qld.gov.au)

Or contact your electricity retailer or electricity provider.



## New Burke Shire Council Driveway/Crossover Policy

This information package has been developed to assist residents who would like to construct a new or modify an existing access driveway/crossover.

This application process does not apply to access works that require a Development Permit for Operational Works under the Sustainable Planning Act 2009.

For more information on constructing a driveway/crossover, please contact CEO Gary Letts by dropping into the Council Administration Office on Musgrave Street or by phoning 07 4745 5100.

## Office of Liquor and Gaming Regulation changes

As you may be aware, a Community Liquor Permit (CLP) is required by unlicensed organisations who wish to sell or supply liquor on a temporary or one-off occasion. These permits are typically obtained for events such as school fetes, trivia nights and sporting fixtures.

Changes have been made to the Office of Liquor and Gaming Regulation (OLGR) in relation to applications for Community Liquor Permits. For more information please visit [www.olgr.qld.gov.au/](http://www.olgr.qld.gov.au/).

## Travel Calm – Secrets for stress-free travel

**Author: Anita Naik**

**Take some toiletries in your hand luggage:**

This is essential if you're travelling with kids. Pack a variety of products that will ease your mind if you suddenly end up with lost luggage, an overnight delay or simply want to freshen up on your way to your destination.

**Essential items to include:**

- Wet wipes
- Toothbrushes
- Travel calm tablets or crystallized ginger to alleviate travel nausea
- Sunscreen
- Aspirin
- Remember: You can no longer carry nail scissors, tweezers or anything sharp so carry them in your main check-in luggage!
- Finally, check the size and weight of your hand luggage before you check in so you aren't made to put it in the hold.

## Councillor Expenses Reimbursement Policy

The Burke Shire Council 'Councillor Expenses Reimbursement Policy' is now available for reading on the Burke Shire Council website. Visit [www.burkeshirecouncil.com](http://www.burkeshirecouncil.com) and follow the links.

## OPPORTUNITIES...

### Greentree's GAME ON Initiative

Greentree's biggest, boldest business competition of its kind is offering you business a chance to win up to \$125K of Greentree business software, \$75K implementation services, \$50K free cloud hosting services over two years.

GAME ON is now open to all businesses Australia wide. If you feel your business systems need an upgrade why not enter for your chance to win this once in a lifetime prize? For more details on the competition and details to enter, visit [www.greentreegameon.com.au](http://www.greentreegameon.com.au).

### Department of Communities (Disability Services) Local Area Coordination

Local Area Coordinators (LAC) work with people with a disability, their families and the local community to bring about positive change.

An LAC can help by:

- providing access to services, supports and networks
- assisting people with a disability to live independently & participate in the community
- providing information on employment, recreation and support options.

The LAC for Normanton, Karumba, Mornington Island, Burketown and Doomadgee is Bonnie Elford. For more information or for assistance please contact Bonnie Elford on 07 4745 1481 / 0427 579 871 or you can email [bonnie.elford@communities.qld.gov.au](mailto:bonnie.elford@communities.qld.gov.au). More information on Disability Services is available at [www.communities.qld.gov.au](http://www.communities.qld.gov.au).

### Digital TV Registration Ends Soon

It is important that everyone remembers to register for the Digital TV Switchover Satellite Subsidy Scheme BEFORE THE 2nd OCTOBER 2011.

Each household needs to register before the close date to receive digital signals even if you already have a digital ready TV. If you fail to register online or by phone you will be required to pay the full costs for the installation of the satellite. To register for the Satellite Subsidy Scheme phone the Digital Ready Information line – 1800 20 10 13 or register online at [www.digitalready.gov.au](http://www.digitalready.gov.au).

If you require further information or help completing your application online please phone the Council on 07 4745 5100 or visit the Administration Office on Musgrave Street.



### Small Business Advisory Service (SBAS) Gulf Savannah and Atherton Tablelands

Gulf Savannah Development (GSD), through their Small Business Advisory Service Program, is providing a free or low cost advisory service to small businesses in the Gulf Savannah and Atherton Tablelands, that have been affected by the natural disasters which have occurred since October 2010.

Funded under the Federal Government's Natural Disaster Assistance program, the Small Business Advisory Service will deliver training, mentoring and business advice, to help businesses recover from the direct and indirect impacts of the natural disaster and build resilience to future events.

A broad range of FREE OR LOW COST advice from our Specialist Consultant Panel can be until 31 May 2012, including:

- ⇒ Business planning
- ⇒ Mentoring
- ⇒ Marketing
- ⇒ Advice on banking and loans
- ⇒ Accounting

- ⇒ Legal advice
- ⇒ Leasing advice



For more information, please contact:  
Annie Cork, Small Business Advisory Service  
Mob: 0437 029 668 or Free Call 1800 630 119  
Email [smallbusiness@gulf-savannah.com.au](mailto:smallbusiness@gulf-savannah.com.au)



The services provided by Gulf Savannah Development are funded by the Australian Government. The SBAS program is supported by the Shire Councils and Business Associations of the region. GSD would also like to acknowledge the support of Skytrans, Advance Cairns, Gulf Accounting, Savannah Way Limited, Northern Gulf Resource Management Group, Ash's Holiday Units & Café, and Savannah Regional Health Services.



# Gregory Campdraft Results 2011

The rollout of competitors at the Gregory Campdraft on June 25th and 26th was proof that Campdrafting is Australia's fastest growing family sport.

Competitors came from across the Nth West and over the NT border for the two day event. The competition was tight which resulted in fine horsemanship being on display.

Huge thanks must go to Paraway Pastrol Co – Gregory Downs, for once again

donating the cattle. Thanks to their stockman headed by Paul Everingham and Luke Murray's contracting team for keeping the cattle up and clearing them all weekend.

Thanks to all the volunteers who made the weekend possible and congratulations to all winners and place getters. See you all next year.

Anne Webber, Campdraft Secretary

## DISTRICT MAIDEN DRAFT

1	Neil Hammond	Black Betty	176
2	John Clarke	Abby	107
3	Nicole Jansen	Blackie	84
4	Paul Everingham	Milly	82
5	Zac Duff	Coalminer	80
5	Neil Hammond	Geronimo	80

Highest Cut- Out: Neil Hammond "Black Betty" - 23

## MAIDEN DRAFT

1	Shane Laffey	Eclipse	170
2	Wayne Saunders	Valda	168
3	John Imeson	Melon	165
4	Shane Laffey	Oaks Real Cool	164
5	Peter Eckford	Pleasure	161
5	Chris Days	Jack	161
7	Stacey Hauke	Casher	148
8	Jane McMillian	Minnesota	147

Highest Cut – Out: Kim Acton "Twist" – 23

Highest First Round: Wayne Saunders - "Valda" and Leanne Imeson – "Pep" – 88

## NOVICE DRAFT

1	Marcus Curr	Pleasure	168
2	Kim Acton	Twist	165
3	Zac Duff	Belle	160
3	Mick Richards	Lucky	160
5	Morgan Richards	Martika	156
6	Shaun Clarke	Skyline	103
7	John Mackay	Sugar Shaker	103
8	James Coates	Al	101

Highest First Round: Marcus Curr - "Pleasure" - 88

Highest Cut - Out: Jason Simms – "Bacardi" - 23

## LADIES DRAFT

1	Anne Webber	Placid Ark	82
2	Cheri Stanger	Pluto	81
2	Leanne Imeson	Desray	81
2	Lucy McGuire	Champ	81
5	Kim Acton	Flash	79
6	Stacey Hauke	Casper	78

Highest Cut – Out: Emma Clarke "Winchester" – 22

## OPEN DRAFT

1	Marcus Curr	Gitterbug	243
2	Shane Laffey	Oaks Chine Doll	184
3	Evan Acton	Blue Moon	164
4	Evan Acton	Cool Dust	105
5	Peter Eckford	Patterson	103
5	Philip Miller	Double Curl Joe	103
5	James Coates	Al	103
8	Jason Simms	Small Talk	102

Highest First Round: Evan Acton - "Blue Moon" and "Cool Dust" – 88

Highest Cut- Out: Evan Acton - "Bella" – 22

## JUVENILE DRAFT

1	Riley Curr	Replay	89
2	Courtney McMillian	Minnesota	85
3	Morgan Richards	Joe Black	81
4	Courtney McMillian	Max	78

Highest Cut – Out: Morgan Richards "Black Jack" - 22

## JUNIOR DRAFT

1	Adrienne Brady	Desray	82
2	Amelia McMillian	Old Mate	74
2	Jake Curr	Gitterbug	74

## MINI – DRAFT

1	Reg McMillian	Mulga Dan	61
2	Erin Imeson	Possum	51
3	Mia McMillian	Rafael	50

## STOCKMAN'S WORKOUT

1	Nathan McDonald	Charlie	84
2	Stacey Hauke	Casper	82
3	Courtney McMillian	Denise	81

## DISTRICT TEAM CHALLENGE

1	BOWTHORN BUSHRANGERS		
	Erin Archer	Bugsy	19
	Dustin Keyes	Mick	59
	Nathan McDonald	Charlie	84

## AWB WOMAN

	Wendy Brady	Phillipa	85
	Anne Webber	Placid Ark	20
	Adrienne Brady	Itchy	21

## LAWN HILL RANGERS

	Steve Gaff	Ronnie	23
	Ashley Smith	Spins Scorpio	79
	John Herde	Kirstie	20

# 2011 Burketown Campdraft

30th September  
- 2nd October

## SCHEDULE OF EVENTS

**FRIDAY 30th September, 7pm:** Paddy Ride \$100 - No Entry Fee. Bull Ride \$2000 -Entry fee \$70.00. Nominations close 6pm.

**SATURDAY 1st October, 6.30am:** Maiden Draft \$1000 - Highest Cut-Out - Entry Fee \$25.00.

**9am:** Kids Gymkhana, Open Draft \$2000 - Highest Cut-Out -Nominations Close 9am - Entry Fee \$45.00.

Ladies Draft \$500, Highest Cut-Out - Entry Fee \$15.00.

**5pm:** Jackpot Barrel Race, Entry Fee \$20.00. Saddle Bronc \$1000 - Entry Fee \$60.00 - Nominations close 6pm.

**7:30pm:** Calf Scruffing \$400 - Entry Fee \$20.00 p/p.

**SUNDAY 2nd October, 6.30am:** Novice Draft \$1400, Highest Cut-Out - Entry Fee \$35.00.

Juvenile Draft \$200, 13 - under 17 years - Entry Fee \$7.00.

Junior Draft \$150, 8 - under 13 years - Entry Fee \$3.00.

Mini Draft \$100, Under 8 years - Entry Fee \$2.00.

Stockmans Workout \$500 - Entry Fee \$10.00 (Maiden Horse & Maiden Rider).

All Finals will be held with the Maiden, Novice & Open. The BRSA reserves the right to alter the Program without notice. All riders compete at their own risk.

FOOD & BAR FACILITIES WILL BE AVAILABLE ALL WEEKEND.

NOMINATIONS TO TONYA MURRAY, FAX: 4745 5059

EMAIL: burketownrsa@hotmail.com

Nominations close Friday 23/09/11 - To be fully paid by 7:00pm Friday 30/09/11

For further information contact Hayley on 0400 817 834 or

Tonya (Secretary) on 0429 174 668 or email burketownrsa@hotmail.com

The Burketown  
Rodeo & Sporting  
Association would  
like to thank all  
sponsors and  
supporters of  
our campdraft.



## ACA MEMBERSHIP

Couple Annual \$120.00

Family Annual \$160.00

Adult Annual \$66.00 Casual \$40.00

Juvenile Annual \$30.00 Casual \$15.00

Junior/Mini Annual \$10.00 Casual \$10.00



# RADF Update...

In June the Burke Shire RADF Committee had the pleasure of unveiling the sculptural pieces it commissioned last year.

In front of the Council chambers you may have noticed the elegant dancing brolgas. These were made by Darryl Cooper from Wondecla on the Atherton Tablelands. Darryl was a teacher at Mt Isa School of the Air for many years and many of his pieces can be found in station gardens throughout the North West. The staff from Council has also done a fine job landscaping around the base of these birds and it looks fantastic. Many tourists are stopping and taking photos of these grand silver birds. They are made of steel and coated in paint that will resist the best efforts of sun, sand, salt and rain. Given the big wet season Darryl had quite a job trying to weld and paint these this summer.

Under the shady gum trees of the Tourist Information Centre is a beautiful bird bath. This piece, made in bronze, is by a talented sculptor from Victoria: Will Wilson. The piece features local animals – barra and galahs – each individually made. It looks fantastic and will soon look even better when the landscaping and lighting is installed.

A third piece also by Will Wilson, a smaller bird bath on a stand and featuring willie wagtails and

finches, is soon to be installed outside the public amenities at Gregory.

The committee is grateful to Arts Queensland (through the RADF programme) and Burke Shire Council for the funding of this project, the council staff and contractors who installed the pieces and landscaped the area around the pieces, all those who assisted in getting the brolgas into Burketown from Ravenshoe and to the two sculptors who worked with the committee to ensure that we got what we wanted and at a price we could afford and whose talent and vision have resulted in the community being able to enjoy some fabulous, inspiring pieces.

Remember these are public art pieces so "belong" to the community. They are for us to enjoy each and every day. We must also be responsible for their care and preservation and ensure that we take care of them so that future generations can continue to enjoy their beauty.

The committee looks forward to being able to work with artists and community to bring more artists and more public pieces into the community. We also look forward to the community applying for funds to run Arts courses when we call for applications in the near future.



## 2011 Arts 'n Crafts Show

The 2011 Arts N Craft Show held 2nd of July 2011 presented to the community a great display of arts and crafts from around the region.

This year the show included live entertainment and a petting zoo which were thoroughly enjoyed by attendees. A closing wine and cheese night and auctioned concluded the day's celebrations with over \$1500 raised for the RFDS and Community Organizations. This year's People's Choice was awarded to a magnificent Wrought Iron hat stand entered by Ivan Thompson.

Burke Shire Council would like to send out a special

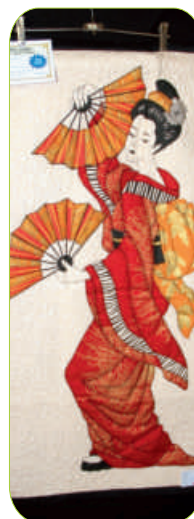
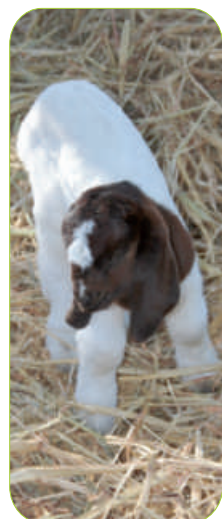
thank-you to Isa Creative Fabrics, Ernie & Kylie Camp, Graham Bailey, Kenny & Glenda Booth, Dennis Kerr & Janice Isles, Pam de Joux, Phil Sealy, VMR, Gary & Jenny Letts, Burketown Nursery, Carol & Russell Cunningham, Darren Foster and all the judges, stewards, stalls, petting zoo and volunteers not mentioned above who helped to make this event possible! We hope you enjoyed the day and look forward to seeing you at the Arts N Craft Show in 2013.

### 2011 Arts N Craft Show Results:

**PEOPLES CHOICE AWARD** - Wrought Iron Hat Stand by Ivan Thompson

### SECTION GRAND CHAMPIONS

Cooking - Lee Davies. Horticulture - Chris Armstrong. Leatherwork - NO ENTRIES. Needlework - Jenny Letts. Heritage Arts & Crafts (Burke & Wills) - Pam de Joux. Poetry - Zara Camp. School Projects - Aidan Camp. Metalwork & Woodwork - Doug Jones. Painting & Drawing - Hannah Simms. Recycling & Trash Art - Chris Armstrong. Jewellery & Beading - Janice Isles. Paper Craft - June Sullivan. Photography - Chris Armstrong. Pottery & Ceramics - Natasha Camp. Lead Lighting - Debbie Glyde.



## Dates for the diary...

### COUNCIL MEETING DATES

Council Boardroom  
Start 9.00am

Wednesday 21 September  
Wednesday 19 October  
Wednesday 16 November  
Wednesday 21 December

### SUNDAY SCHOOL AND NIGHT GOSPEL

Old Church/HACC Hall

Sunday School 9.30am Gospel 7.30pm

Sunday 11 September  
Sunday 9 October  
Sunday 23 October  
Sunday 6 November  
Sunday 20 November

## Community Plan Update

Community Consultation Engagement and Feedback  
25 August – 26 September

Review Consultation Process - 30 September – 14 October

Re-engage Community with Draft Community Plan  
21 October – 15 November

Adoption of Community Plan - 16 November 2011

## Burke Shire Calender Of Events

Date	Event	Contact Details
Saturday 17 September	HACC Trash and Treasure	HACC Coordinator Ph: 07 4745 5100
Sunday 25 September	Gregory CWA Horse Sports	Contact: Kylie Camp Ph: 07 4748 5585
Monday 19 September	School Holidays Return Monday 3 October	Burke Shire State School
Friday 30 Sept – Sunday 2 Oct	Burketown Campdraft and Horse Sports	Contact: Glenda & Ken Booth Ph: 07 4745 5193
Saturday 8 October	Kindy Market Stall 9am – 12pm	Contact: Burketown Kindy Ph: 07 4745 5125
Tuesday 1 November	Melbourne Cup Day	Contact: Burke Shire Council Ph: 07 4745 5100
Saturday 5 November <b>CANCELLED</b>	HACC Trash and Treasure	Contact: HACC Coordinator Ph: 07 4745 5100
Friday 9 December	School Holidays Return Monday 23 January	Burke Shire State School
Monday 26 and Tuesday 27 December	Christmas Day and Boxing Day	
Tuesday 6 December	HACC Christmas Lunch	Contact: HACC Coordinator Ph: 07 4745 5100
Saturday 10 December	Christmas in the Park	Contact: Burke Shire Council Ph: 07 4745 5100

 School Holiday
  Public Holiday
  Show Day

Gregory Branch  
of QCWA

# Horse Sports and Family Fun Day

Sunday the 25th of September 2011

Starting 8.00am – Gregory Sports Reserve

### HORSE EVENTS

NOMINATIONS ADULT \$5.00 CHILDREN \$2.00

- Barrel Race Gents
- Ladies
- 10 – 13 years
- 7 – 9 years
- Lead (under 10)
- 6 & Under
- Figure of 8 - Lead (Under 10)
- 6 & Under
- Bending Lead (Under 10)
- 6 & Under
- Flag Lead (Under 10)
- 6 & Under
- 7 – 9 years
- 10 – 13 years
- Ladies
- Gents
- Bending 7 – 9 years
- 10 – 13 years
- Ladies
- Gents
- Figure of 8 7 – 9 yrs
- 10 – 13 yrs
- Ladies
- Gents
- Musical Chairs 6 & Under (lead)
- 7 – 9 yrs (lead)
- Billy Can Race 10 – 13 years
- Ladies
- Gents
- Open Gretna Green (Restricted to 15yrs & over)
- Guzzlers Race Gents
- Ladies

### LEAD EVENTS

FOR CHILDREN WHO CANNOT RIDE UNAIDED. THEY CANNOT ENTER IN OTHER AGE GROUPS.

**EVENTS 1-6** 5 SECOND PENALTY IF DRUM KNOCKED OVER.

**FIGURE OF 8 & BENDING** DISQUALIFICATION IF PEG KNOCKED OVER.

### TRACK & FIELD EVENTS

NOMINATIONS \$2.00

- T Sack Race -10 to 13 years
- T -7 -9 years
- T -6 & under
- T - Open
- T Hop, Step & Jump -Gents
- T -Ladies
- T 3 Legged Race -Adult/Child (U/14)
- T Foot Race - 6 & Under
- T -7 - 9 years
- T -10 – 13 years
- T -Gents
- T -Ladies
- T Dustpan Brush Throw -10 to 13 years
- T -Under 10
- T Broom Throw -Ladies
- T -Gents
- T Stepping the Distance -Open

Nominations taken on the day or fax / email to Rose- Marie Newton 4745 3526 / talawanta@reachnet.com.au

For further details please contact:

Kylie Camp [President] on 4748 5585, Sue Clarke on 4748 5575 or Rose-Marie Newton 4745 3526

**PART PROCEEDS SUPPORTING THE GREGORY R.F.D.S HEALTH CLINIC - FOOD AND DRINKS AVAILABLE ON DAY**

RIDERS ENTER ALL EVENTS AT OWN RISK MINORS TO BE ENTERED BY A PARENT RIDERS MUST WEAR RIDING BOOTS AND HELMET



# Burke Shire Business Directory

## Burketown Nursery



### Burketown Nursery

Come see us for all your gardening supplies. Orders welcome.

**Open Saturday and Sunday 8am - 2pm**

(Open other times by prior arrangement)

Visit: lot 144 Gregory Street, Burketown

Call Jenny on 0417 738 404

## Cleaning Services



### Sue Arnold Cleaning Services

Professional Carpet Cleaning **NOW AVAILABLE** in Burketown and Surrounds.

Also available in Burketown only is Car detailing.

**Make an appointment today.**

Sue Arnold Cleaning Services

Phone: 0447 055 030

## Burketown Pub

### Australia's Greatest Outback Pub

Ph: (07) 47455104 Fax: (07) 47455146

Email: [info@burketownpub.com.au](mailto:info@burketownpub.com.au)

**Open from 11am - seven days a week**

Lunch: 12noon - 1.45pm - Mon to Sat.

Dinner: 6.30pm - 8.30pm - 7 days a week

Motel units and budget Pub rooms,

Icy cold beer, party ice, snacks and more

## Burketown Bargain Barn

### Burketown Bargain Barn

**Bargains galore!** Including:

- Furnishings • Household Goods • Clothing
- White Goods • Fresh Fruit & Veggies

Ph: 07 4745 5244 or Mob: 0417 175 744.

## Caravan Park

### Burketown Caravan Park

Ph: 07 4745 5118 Fax: 07 4745 5126 Email: [burketowncaravanpark@blue1000.com.au](mailto:burketowncaravanpark@blue1000.com.au)

Website: [www.burketowncaravanpark.net.au](http://www.burketowncaravanpark.net.au)

- Accommodation (air conditioned cabins and powered sites)
- Groceries • Take-away food • Ice • Fishing supplies & Bait

## Morning Glory Restaurant

### Morning Glory Restaurant

Roast chickens, take-away food, ice cream, cakes & desserts, coffees & milkshakes.

**Open Monday to Sunday, 8.30am - 7.30pm**

Ph: 4745 5295 Fax: 4745 5280

Visit: 87 Beames Street, Burketown

Email: [morninggloryrestaurant@gmail.com](mailto:morninggloryrestaurant@gmail.com)

## Adels Grove



### Adels Grove at Lawn Hill Gorge

Accommodation tents or rooms,

Meals and licensed restaurant,

Transfers to National Park

Tours to World Heritage Riversleigh Fossils

Swimming, fishing or simply relaxing

**Bowser fuel now available.**

Ph: 07 4748 5502, Fax 07 4748 5600.

Email: [adelsgrove@bigpond.com](mailto:adelsgrove@bigpond.com)

## Arts n Crafts

### Arts n Crafts

**Coming soon** will be workshops for kids so look out for the details and get in early!!!

**Opening hours** (until further notice):

Thursday 5.00pm to 8.00pm

Friday 5.00pm to 8.00pm,

Saturday 10.00am to 4.00pm,

Sunday 10.00am to 4.00 pm

*Arts n Crafts store may close early during the wet season.*

## Tirranna Roadhouse

### Tirranna Roadhouse

**Monday to Saturday 5:45am - 8:30pm**

**Sunday 8:00am—7:00pm**

- Fuel • Accommodation • Groceries
- Take away food including Breakfast
- Licensed Dining • Ice & Bait • Smokes

Ph/Fax: 4748 5657 Ph: 4748 5658

Email: [tirrannaroadhouse@bigpond.com](mailto:tirrannaroadhouse@bigpond.com)

## Store & Post Office

### Burketown Convenience Store & Post Office

**Monday to Friday - 9am to 5pm**

**Saturday - 9am to 12pm, Sunday - Closed**

Public Holidays - Closed (times are subject to change)

Phone 07 4745 5106

## Gregory Downs Hotel

### Gregory Downs Hotel

- Accommodation • Meals

- Camping Facilities

- Caravan Storage

Phone: 07 4748 5566

## Northern Photography

### Northern Photography

Photography Services - **"Creating Moments that last a Lifetime"**

Phone: 0467 633 792 Email: [melissanorth72@live.com.au](mailto:melissanorth72@live.com.au)

Web: [www.northernphotography.net](http://www.northernphotography.net)

Schedule effective Thur 7 July 2011

## Monday

Origin	Dest.	Dep.	Arr.	Flt #	Origin	Dest.	Dep.	Arr.	Flt #
CNS	NTN	12:05	13:35	Q654	ISA	DMD	9:20	10:20	Q655
NTN	ONG	14:05	14:55	Q654	DMD	ONG	10:40	11:20	Q655
ONG	BUC	15:15	15:55	Q654	ONG	NTN	11:40	12:25	Q655
BUC	DMD	16:15	16:40	Q654	NTN	CNS	12:55	14:15	Q655
DMD	ISA	17:00	18:00	Q654					

## Tuesday

Origin	Dest.	Dep.	Arr.	Flt #	Origin	Dest.	Dep.	Arr.	Flt #
CNS	NTN	12:50	14:20	Q656	ISA	DMD	9:20	10:20	Q653
NTN	ONG	14:50	15:40	Q656	DMD	BUC	10:40	11:05	Q653
ONG	DMD	16:00	16:40	Q656	BUC	ONG	11:25	12:05	Q653
DMD	ISA	17:00	18:00	Q656	ONG	NTN	12:25	13:10	Q653
					NTN	CNS	13:40	15:00	Q653

## Wednesday

Origin	Dest.	Dep.	Arr.	Flt #	Origin	Dest.	Dep.	Arr.	Flt #
CNS	NTN	12:50	14:20	Q656	ISA	DMD	9:20	10:20	Q655
NTN	ONG	14:50	15:40	Q656	DMD	ONG	10:40	11:20	Q655
ONG	DMD	16:00	16:40	Q656	ONG	NTN	11:40	12:25	Q655
DMD	ISA	17:00	18:00	Q656	NTN	CNS	12:55	14:15	Q655

## Thursday

Origin	Dest.	Dep.	Arr.	Flt #	Origin	Dest.	Dep.	Arr.	Flt #
CNS	KRB	12:15	13:45	Q652	ISA	DMD	9:20	10:20	Q651
KRB	NTN	14:05	14:20	Q652	DMD	ONG	10:40	11:20	Q651
NTN	ONG	14:50	15:40	Q652	ONG	KRB	11:40	12:20	Q651
ONG	DMD	16:00	16:40	Q652	KRB	NTN	12:40	12:55	Q651
DMD	ISA	17:00	18:00	Q652	NTN	CNS	13:25	14:45	Q651

## Friday

Origin	Dest.	Dep.	Arr.	Flt #	Origin	Dest.	Dep.	Arr.	Flt #
CNS	NTN	12:05	13:35	Q654	ISA	DMD	9:20	10:20	Q653
NTN	ONG	14:05	14:55	Q654	DMD	BUC	10:40	11:05	Q653
ONG	BUC	15:15	15:55	Q654	BUC	ONG	11:25	12:05	Q653
BUC	DMD	16:15	16:40	Q654	ONG	NTN	12:25	13:10	Q653
DMD	ISA	17:00	18:00	Q654	NTN	CNS	13:40	15:00	Q653

NTN=Normanton  
ISA=Mount Isa

ONG=Mornington Island  
CNS=Cairns

BUC=Burketown  
KRB=Karumba

DMD=Doomadgee

1300 759 872 | [www.skytrans.com.au](http://www.skytrans.com.au)

Bookings can be made by phoning Skytrans on 1300 759 872 or on the web at [www.skytrans.com.au](http://www.skytrans.com.au)

Customers departing Burketown are requested to check-in at the Council office 60 minutes prior to the scheduled departure time.