



BURKE SHIRE COUNCIL

NEWSLETTER

Edition 21 May/June 2009
(Issued on 03 June 2009)

We have had a very busy month and I must say congratulations are in order for another successful Fishing Competition & May Day weekend. These events just don't happen, and its thanks to the organizing committees & volunteers that Burke Shire events are highly patronised and successful. Anzac Day was well attended with approximately 45 people attending breakfast after the dawn service. Highlights of the above events are included inside this edition.

The next event on our Shire Calendar is the Gregory Camp Draft & Horse Sports on the 20 & 21 June.

If you have a community event or fundraising activity please contact me and I will gladly include it in our newsletter.

Cheryl Portch
Editor

Key Council Dates

Local Government Week	1 - 7 June 2009
Agenda closing date for June Council meeting	5 June 2009
Public Holiday (Queens Birthday)	8 June 2009
RDO Council External Staff	9 June 2009
Ordinary Meeting of Council	17 June 2009
Agenda closing date for July Council meeting	3 July 2009
Ordinary Meeting of Council	15 July 2009
RDO Council External Staff	13 July 2009

CURRENT PUBLIC NOTICES

All public notices are displayed at Nowlands, Burketown Post Office, Burketown Pub, Burketown Health Centre, Gregory Downs, Mougibi and the Shire Office.

Calico Bag Give Away
RADF Meeting
Arts & Craft Show .

SWINE FLU UPDATE—see Pages 2 and 3

Swine Flu Question and Answers

What is swine flu?

Swine flu is a respiratory disease of pigs caused by type A influenza viruses that cause regular outbreaks in pigs. People do not usually get swine flu, but human infections can and do happen.

The new strain of Swine flu is contagious and is spreading from human to human, however, at this time it is not known how easily it spreads between people. It is thought to be spread in the same way as seasonal influenza and other common respiratory infections are spread.

What is the current situation in Queensland?

As at 28 May 2009, there are 66 confirmed cases of swine influenza in Australia, 7 in Queensland.

What are the symptoms?

The symptoms of swine flu are similar to those of seasonal influenza, including:

How can it be prevented?

The seasonal influenza vaccine is unlikely to offer protection against swine flu. However, it is strongly recommended that people continue to be vaccinated against seasonal influenza.

Fever	Fatigue	Body Aches	Chills
Cough	Sore Throat	Headache	

- wash your hands frequently with soap and water or use an alcohol based hand gel
- wash your hands prior to touching your eyes, nose or mouth
- when coughing or sneezing, cover your mouth and nose with disposable tissues which should be disposed of immediately
- don't share items such as cigarettes, glasses or cups, lipstick, toys or anything which could be contaminated with respiratory secretions
- maintain at least one metre distance from people who have flu-like symptoms such as coughing or sneezing
- consult your doctor if you have a cough and fever, and follow their instructions, including taking medicine as prescribed

1. Communication to Individuals:

A. What individuals can do

Influenza viruses are generally spread in two ways:

respiratory droplets from an infected person's coughs or sneezes (these droplets usually remain in the air for only a few seconds and generally travel less than one metre); and touching contaminated surfaces (including hands) or fluids and then touching the mouth, nose or eyes.

Accordingly, the most effective ways that people can protect themselves (in the absence of a vaccine) are to:

- stay at home when sick, so you don't infect other people;
- wash your hands regularly with soap and water or an alcohol-based product;
- try to keep your hands away from your face;
- cover your mouth and nose with a tissue (not your hands) when coughing or sneezing, and dispose of the tissue in the closest bin;
- stand and sit back from other people (where possible try to maintain a distance of at least one metre);
- wear a mask if you are sick and need to be in a public space; and
- seek medical advice if you are worried (either via websites, call-centres or in person if necessary), particularly if you have a fever and any one of the following symptoms: difficulty breathing, chills and shivering, muscle aches and pains, sore throat, dry cough, stuffy or runny nose, or extreme tiredness.

Individuals and families might also consider:

- teaching children about hand washing and cough and sneeze etiquette;
- planning how you or your partner might be able to stay at home if you are sick, if you need to care for sick family members or friends, or if your children are not able to attend school or child care temporarily; and

- preparing a list of telephone numbers in case of emergency, including the family doctor. This might also include telephone numbers for your neighbours in case you notice they are ill or need assistance, especially those living alone.

During a pandemic, it is important that Queenslanders listen to authoritative government advice, which will be provided through all available means including television, radio, newspapers, internet sites and public information hotlines.

Further information is available at www.flupandemic.gov.au, www.qld.gov.au/pandemic or refer to the Useful Resources section.

B. What businesses and non-government organisations can do

The Queensland Government encourages all businesses and non-government organisations to be prepared. Planning ahead could minimise the impact of a pandemic on the organisation, help protect staff and contribute to national recovery.

It is particularly important that organisations providing key services to the community or key infrastructure make every effort to continue operations. Organisations are encouraged to take steps now to understand and monitor the risk, plan to protect their business, plan to protect staff, plan to communicate with staff, customers and suppliers, and plan to recover as quickly as possible.

Organisations should note the key government preparedness, response and recovery strategies outlined in this plan and consider the implications for their business.

Industry representatives are welcome to contact the relevant Queensland Government Department for their sector with any further queries.

More comprehensive guidance is available through the Useful Resources section. In particular, the Queensland Government has developed *Pandemic Planning in the Workplace* guides for:

infrastructure owners and operators;

small-medium businesses; and

funeral industry operators.

These industry guides are available electronically via www.qld.gov.au/pandemic.

SUNDAY SCHOOL & NIGHT GOSPEL MEETINGS BURKETOWN COMMUNITY HALL

Dates	Times	Contact
• 7 June 2009	<i>Sunday School 9:30am</i>	<i>Doug & Faye Jones</i>
• 21 June 2009	<i>Night Gospel 7:30pm</i>	<i>Ph: (07) 4745 5058</i>
• 19 July 2009		

Burke Shire Calendar of Events

20 & 21 June	Gregory Campdraft and Horse Sports <i>Contact: Sue Clarke</i> <i>Ph: 07 4748 5575 Fax: 07 4748 5670</i>
29 August	Arts & Craft Show <i>Contact: Burke Shire Council Ph: 4745 5100 Fax: 4745 5181</i>
Sept—TBA	Burketown Campdraft and Horse Sports <i>Contact: Glenda & Ken Booth Ph: 07 4745 5193</i>
8 – 12 September	Gregory Mini School <i>Contact: Kylie Camp Ph: 07 4748 5585</i>
20 September <i>(1st Sunday of school holidays)</i>	Gregory CWA Horse Sports <i>Contact: Kylie Camp Ph: 07 4748 5585</i>



**BHP BILLITON'S CANNINGTON MINE
NORTH QUEENSLAND SPORTS DEVELOPMENT BURSARY**

Council is calling for nominations for the BHP Billiton's Cannington Mine North Queensland Sports Development Bursary. Twenty-five bursaries of \$500 will be awarded to winners from the North Queensland Shires.

Nominations are open to individual sports persons under the age of 18 (as of 31 December 2009). Nominations can be emailed, faxed, posted or handed in at the Council Office to and must be received by 8 June 2009. For more information please contact the Council office on Ph: 47455100.

BURKE SHIRE RADF

Regional Arts Development Fund

**FUNDING IS AVAILABLE
FOR APPROVED
COMMUNITY ARTS PROJECTS**

Round 1 funding closed on 30 May 2009 but the RADF Committee will be calling for applications for Round 2 funding soon, so please watch notice boards for flyer.

There is \$ available to be allocated for various approved projects that have an arts focus

Application & Guidelines are available by contacting the Burke Shire Council Office. If you need help filling out an application please contact Cheryl Portch Ph: 4745 5100

Chief Executive Officer
3 June 2009

Library News

Membership for
the Library &
Sport Library
is free

Next Colouring in Comp

- **Monsters V Aliens**

***Come in and get your sheet.
Prizes to be won.***

*If there are any books you would
like us to order in, send me a list
and I will do my best get them in.*

≈New Book Arrivals≈

Big Book Club

Kristina Olsson - The Chine Garden

Evan Hornung - Dog Boy

Little Big Book Club

Ursula DuPosarsky - The Terrible Plop

Todd Parr - The Feelings Book

Jez Alborough - Where's My Teddy



Breast Screen Clinic

27 July to 29 July 2009

Ph: 132050 for appointments

Women's Health GP

27 July to 28 July 2009

Ph: 47455133 for appointments



QLD RECREATIONAL FISHING RULES & REGULATIONS GUIDE

is available at the Council Office and the
Tourist Information Centre.

For more information on this guide please
contact Caroline Dalton Ph : (07) 3225 1038
or email: Caroline.Dalton@dpi.qld.gov.au

**Note* Some bag limits and
fishing size had changed on
31/3/09**

**TIDE TIME CHARTS
ARE AVAILABLE FROM THE
COUNCIL OFFICE OR CAN BE
ACCESSED ON THE DPI FISHERIES
WESITE**



ANDERSON'S & BANJO'S

In the area for a very limited time

21st May till 22nd June

TAKE ADVANTAGE AND BOOK NOW!!!

- ◆ PROFESIONAL CARPET CLEANING
 - ◆ PROFESSIONAL PEST CONTROL
- Protect your home from pests and termites

Fully Insured - Fully Licensed
Call Dave direct on 0416191670



Come watch the **Rugby League State of Origin - 2nd game** on the big screen.

Where: Burketown Shire Hall

Why: Fundraising for HAAC

When: 24 June 2009

Entry: \$1

Raffles

BBQ

Licenced
(proposed)



In partnership with Landcare Australia



* Offer is valid from 2/05/2008 to 5/06/2008 for phones deposited at participating collection points. Participating collection points are responsible for arranging for phones to be collected during this period and the phones must be received by the recycler no later than 20/09/2008. Up to 100,000 trees to be planted, based on one tree per mobile phone handed up to 100,000 handsets. For more information visit www.mobilemuster.com.au

Think B4U Print

- 1 Ream of paper = 6% of a tree & 5.4kg CO2 in the atmosphere
- 3 Sheets of A4 paper = 1 litre of water

RECYCLE OLD PRINTER CARTRIDGES

by putting them in the box provided
at Burketown Post Office

MOBILE MUSTER
Obsolete mobile phones can be left at
Council office to be sent away for
recycling.

Queensland School Vacation Dates

Winter Vacation	Saturday 27 June to Sunday 12 July 2009
Spring Vacation	Saturday 19 September to Sunday 4 October 2009
Summer Vacation	Saturday 12 December 2009 to Tuesday 26 January 2010

PUBLIC NOTICE

SCHEDULE OF ORDINARY MEETINGS FOR 2009

Pursuant to Section 464 (1) of the *Local Government Act 1993*, the following is a schedule of dates for the Ordinary Meetings of the Burke Shire Council for the year 2009:-

Wednesday 17 June 2009

Wednesday 16 September 2009

Wednesday 15 July 2009

Wednesday 21 October 2009

Wednesday 19 August 2009

Wednesday 18 November 2009

Wednesday 16 December 2009

Agenda items for Ordinary meetings must be with the Chief Executive Officer 10 days before the meeting to allow for reports to be prepared for Council's consideration.

All meetings are to be held in the Council Chamber in the Shire Office, Musgrave Street, Burketown, and are scheduled to commence at 9:30am.

Chief Executive Officer

DID YOU KNOW: Council Minutes and agendas and business papers are published on Council's website! Go to www.burkeshirecouncil.com.au and have a look.



North & West Queensland

Primary Health Care

53 Enid Street
PO Box 1127
MT ISA QLD 4825

Ph: 07 47494615
Fax: 07 4743 4858
Free Call: 1800 221131

June 15 & 16	Discipline	July 8	Discipline	July 9 & 10	Discipline
Burketown	Cultural Liaison Officer	Gregory	Cultural Liaison Officer	Burketown	Cultural Liaison Officer
	Physiotherapist		Dietitian		Dietitian
	Intern Psychologist		Occupational Therapist		Occupational Therapist
	Podiatrist		Speech Pathologist		Speech Pathologist

Staff	Discipline	Email	Mobile
Katherine Galligan	Team Leader	Katherine@nwqphc.com.au	0429 725693
Kim Nguyen	Speech Pathologist	kimn@nwqphc.com.au	1427 966911
Lisa Hutchinson	Dietitian	lisas@nwqphc.com.au	0428 455903
Anna Warrick	Occupational Therapist	annaw@nwqphc.com.au	0437 340503
Carmen Southam	Intern Psychologist	carmens@nwqphc.com.au	0427 587213
Kate Beltran	Physiotherapist	kateb@nwqphc.com.au	0409 483518
June Mathewson	Dementia Advisor	junem@nwqphc.com.au	0427 271775
Caroline Radowski	Podiatrist	caroliner@nwqphc.com.au	0429 723000
Eleanor Ruane	Continence Advisor	eleanorr@nwqphc.com.au	0429 649846
Vivian Von Senden	Cultural Liaison Officer	vivianv@nwqphc.com.au	0427 117029

PUBLIC NOTICE

Arts & Craft Show

2009

Burke Shire Council will be presenting their annual Arts & Craft Show in Burketown on Saturday 29 August 2009. Programs will be available mid June from the Council Office and website.

The Arts & Craft Show will also incorporate market stalls at the rear of the Shire Hall. Individuals or organisations are invited to express their interest in having a market stall to sell their wares or to fundraise for their organisation. Stalls are free of charge but must be booked in advance with Cheryl Portch before 3 August 2009.

A "Wine & Cheese" presentation will be conducted in the evening where an auction will take place of donated crafts & exhibits. Proceeds from this auction will go to RFDS & community organisations.

If you require more information regarding the Arts & Craft Show or the events on this day then please contact Cheryl Portch or Jenny Williams at the Burke Shire Council office on Ph: 47455100

Acting Chief Executive Officer 8 May 2009

Biggest Morning Tea



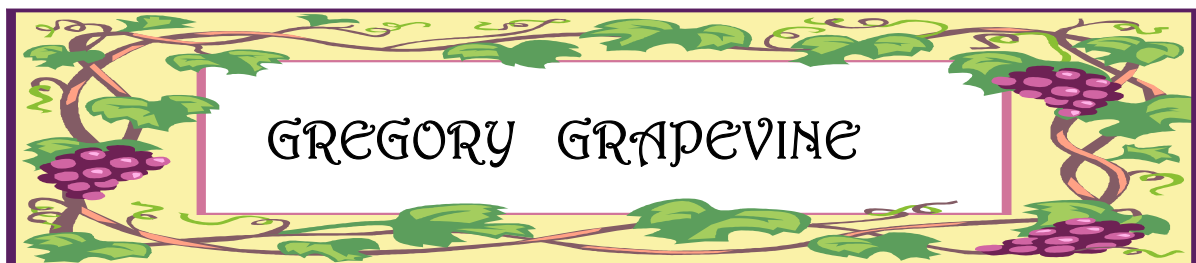
Burketown's Biggest Morning Tea was held on Mother's Day 10 May 2009 at 'The Dek'. Cuppachinos, cakes, games, prizes & raffles were on offer throughout the morning. Finishing in the afternoon with a special pampering including, pedicures, foot spas & Spa Experience. All this was offered for \$10 a head and a total of \$626 was raised for the Cancer Council.

This event was organised by Jenny Williams. A big thank you for all those who volunteered their time & donated prizes, also Savannah Lodge for the use of their venue.



Ladies relaxing and getting pampered at after the biggest morning tea.





RFDS Clinic Gregory (Doctor & Child Health Nurse)

From 9am Thursday Fortnightly

14th & 29th May

11th & 25th June

10th, 24th & 31st July

North & West Qld Primary Health Care – Gregory Visits every 3 months

Ph Mt Isa Office for more details 4749 4615 Free call 1800 221 131

Psychologist
Occupational Therapist
Speech Therapist
Dietitian
Podiatrist
Physiotherapist
Cultural Liaison Officer



Social Tennis – Thursday Night

Starts around 6:30pm every Thursday night.

Bring along meat/bread to share on the BBQ

CWA – Gregory Branch

How Many Grids To Gregory cookbooks are available for sale - \$8 each or for local Burke Shire residents and business a discount of 20 books for \$120 (a saving of \$2 per book) – contact either Sue Clarke (Ph 47485575) or Tess Arnold (Ph 47485584)

Gregory SES

To join please see/ring Ian Forshaw 47485521

Gregory School Raffle

Drawn Sunday night at the Bullride

Wheelbarrow & Drinks – 1st prize won by Alana McDonald – Mt Isa

Wheelbarrow & Drinks – 2nd prize won by Storm from Nardoo

Mothers Day Raffle – 1st prize won by Kimberley Arnold – Planet Downs

Mothers Day Raffle – 2nd prize won by Sid Geeve – Planet Downs

Before



After



Burketown's Biggest Loser finished on the Tuesday 5 May 2009 after 14 weeks of weigh-ins. The team lost 58 kgs overall Laurie Portch being the overall winner/loser with a 15% body loss. "Burketown's Biggest Loser" will start again soon so if anyone is interested in joining contact Cheryl Portch Ph: 0428 578442 or 4745 5271. Proposed starting is date Wednesday 10 June. First weigh-in will be held at the tennis courts at 5pm Wednesday 3 June.

WATERWISE

WaterWise Trivia to impress your friends		Source: Waterwise, Department of Natural Resources
What percentage of the world is covered by water?	80%	
What percentage of the world's water is readily available for humans to use	1% (97% is salty and 2% ice)	
What is the world's driest continent, has the least runoff and is classified as 2/3 desert	Australia	
How much water is contained in an adult human body?	Approx. 45L Men: 60-65% water Women: 50-60% water Human brain: 75% water	
How much water does the human body loose daily?	3-3.5L	
Why is water good for people on a diet?	No calories or sugar; reduces hunger, helps metabolise stored fats, helps maintain muscle tone and helps rid of body wastes	
Do Queenslanders use more water indoors or outdoors?	50/50 in winter but more out-doors in summer	
What percentage of water treated by Local Authorities is actually consumed by people?	Typically less than 1% Most goes on lawns, showers etc.	
An average person can survive for nearly two months without eating: How long without drinking?	Less than a week	
What is Queensland's urban water supply infrastructure worth?	\$9.3 billion – or \$5000 per person	
How much water is used inside and outside the average Australian home every day?	Total 635L per person per day	

Inside the House

Per toilet flush single-flush toilet -12L
 Per bath - 50-150L
 Per shower -40-250L
 Per dishwasher load - 20-90L
 Per washing machine load -40-265L
 Tap running while cleaning teeth -5L
 Hand basin per person - 5L
 During, cooking, household cleaning -8L
 Average in Queensland inside the house -205L per person per day

Outside the house

Garden sprinkler up to -1000L or more
 Car washing with hose -100-300L
 Hosing driveway -50-100L
 Dripping tap -20L
 Average in Queensland outside the house -205L per day
 Industrial / Commercial -125L per person per day
 Fire fighting/ Leakage/ Community use -100L per person per day

How to conserve water at home

Indoors

Convert to a dual-flush toilet
 Use your washing machine and dishwasher only when full
 Install water saving shower heads and flow restrictors
 Take shorter showers
 Check for leaking taps
 Rinse vegetables and dishes in a sink of water: not under a running tap
 Keep a bottle of drinking water in the fridge rather than running the tap until it's cool enough to drink

Outdoors

Avoid watering in windy conditions
 Keep your garden free of weeds
 When sprinkling, use a tap timer
 Soak your garden: don't spray it
 Water the roots – not the leaves
 Use a trigger nozzle on your hose
 Sow drought-tolerant lawn seed
 Use a good mulch: It reduces evaporation
 Wash the car using a bucket: not the hose
 Sweep the path: don't hose it

Arts & Craft Show

PUBLIC NOTICE

WOULD YOU LIKE TO BE A STEWARD FOR THE ARTS & CRAFT SHOW

The Arts & Craft committee would like to call for any interested people who would like to be a steward for the 2009 Arts & Craft show on the 29th August.

The current categories include:-

*HORTICULTURE PAINTING/DRAWING INVENTIONS JEWELLERY/BEADING
LEATHERWORK COOKING METALWORK & WOODWORK PHOTOGRAPHY
NEEDLEWORK & MACRAMÉ PAPER CRAFT POTTERY/CERAMICS
SCHOOL PROJECTS HERITAGE ARTS & CRAFTS POETRY*

Please contact Cheryl Portch or Jenny Williams by Wednesday 3 June at the Council office;
Ph: 4745 5100 to express your interest in becoming a Steward.

Acting Chief Executive Officer
8 May 2009

Burketown State School Student Council Fishing Raffle Tickets only \$1 each

for your chance to win some great fishing gear:

- Duracell Torch
- Classic Barra Lure
- Shakespeare Power Plus Fishing Rod
- Oz Trail Chair
- Legend Medium Flathead Landing Net

Tickets available at: Burketown State School, Burketown Caravan Park, Nowlands, Burketown Post Office, Debbie's Food Van or see Danielle around town. If you can't make it into town, give the school a call on Ph: 47455124.

All monies raised will go toward the Burketown State School 2009 School Camp

Raffle drawn: **Friday 12th June**

BURKETOWN BARRAMUNDI FISHING ORGANISATION INC. (BBFO)

32nd World Barramundi Fishing Championships 2009

Competition Results

<u>SECTION</u>	<u>CATEGORY</u>	<u>NAME</u>	<u>ADDRESS</u>	<u>WEIGHT(kg)</u>	<u>LENGTH(m)</u>	<u>PRIZE</u>
Open	Heaviest Barramundi	Desmond Piltcher	Glendon	13.34	1.00	\$3200
Open	Runner Up Heaviest Barramundi	Daniel Fudriga	Halifax	10.54	.92	\$1000
Open	Third Heaviest Barramundi	Daniel Fudriga	Halifax	9.60	.90	\$500
Open	Mystery Weight - Jew, Bream, Salmon, Grunter or Barramundi	Clinton Murray, Neil Ning, Matthew Morrison	Burketown, Mt Isa, Cairns	2.15		\$200 each
Open	All Round Angler	Kevin Anderson	Burketown	7 Species		\$200
Open men	Heaviest Salmon	Greg Portch	Burketown	4.42	.97	\$150
Open men	Heaviest Bream	Shane Gordon	Townsville	1.16	.41	\$150
Open men	Heaviest Grunter	John Walker/Phil Hammond	Mt Isa/T'ville	1.98	.56	\$150
Open men	Heaviest Fingermark	Paul Rossi	Burketown	1.62	.49	\$150
Open men	Heaviest Other Fish	Kevin Anderson	Burketown	3.70 Jewfish	.77	\$150
Open Women	Heaviest Salmon	Pam De Joux	Burketown	3.22	.73	\$150
Open Women	Heaviest Bream	Jessica Gray	Burketown	1.7	.41	\$150
Open Women	Heaviest Grunter	Anna Marshall	Burketown	1.58	.51	\$150
Open Women	Heaviest Other Fish	Jessica Gray	Burketown	1.96 Queenfish	.69	\$150
Junior	Barramundi	Sage Marshall	Burketown	5.32	.76	Prizes
Junior	All Round Angler	Sage Marshall	Burketown	4 Species		Prizes
Junior	Salmon	Aiden Portch	Burketown	3.04	.78	Prizes
Junior	Bream	Aiden Portch	Burketown	1.02	.38	Prizes
Junior	Grunter	Tyrone Cooling	Burketown	1.72	.52	Prizes
Junior	Heaviest Fingermark	None Caught				Prizes
Junior	Heaviest Other Fish	Claude Symss	Burketown	1.82 Jewel Fish	.64	Prizes
Junior	Most Catfish Boys	Sage Marshall	60			\$100 each
	Girls	Shannyn Anderson	85			
Team Event (Team of 4)	The Rosco Shiners	Paul Rossi Linda Hodgeson Pete Willcocks Janet Creighton	Burketown	8 Species		\$780

Other Competition Details:

Total Nominations : 288 individuals & Families; 7 Teams

Adult Nomination Prize:

A 3.85 Boat, motor & trailer package won by **Dianne Castray** from Cairns

Junior Nomination Prize:

A waterproof digital camera package won by **Meshak Bruce** from Townsville

The competition is a non profit fund raiser for local community groups and this year raised approximately \$5,000.

On behalf of the BBFO a special thanks to all sponsors and volunteers who helped to make the weekend another success. (Major Sponsors were Mougibi Housing Co-op Society, Burke Shire Council, Ringrose Transport and Burketown Pub)



Desmond Piltcher with his winning barramundi



David Curry with a couple of beauties but alas not good enough to claim a prize.

Gulf

For bookings please ring the following number – 1300 759872

Schedule effective 1st June 2009

Bookings can also be made online at www.skytrans.com.au

****Please note ** – Burke Shire Council does not book flights**

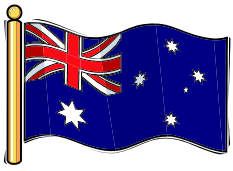
Monday Westbound					Monday Eastbound				
Origin	Dest.	Dep.	Arr.	Flt #	Origin	Dest.	Dep.	Arr.	Flt #
CNS	NTN	12:20	13:55	NP504	ISA	DMD	9:25	10:25	NP0505
NTN	ONG	14:25	15:15	NP504	DMD	ONG	10:50	11:30	NP0505
ONG	BUC	15:40	16:20	NP504	ONG	NTN	11:55	12:45	NP0505
BUC	DMD	16:45	17:20	NP504	NTN	CNS	13:15	14:50	NP0505
DMD	ISA	17:45	18:45	NP504					
Tuesday Westbound					Tuesday Eastbound				
Origin	Dest.	Dep.	Arr.	Flt #	Origin	Dest.	Dep.	Arr.	Flt #
					ISA	DMD	7:00	8:00	NP0503
					DMD	BUC	8:25	9:00	NP0503
					BUC	ONG	9:25	10:05	NP0503
					ONG	NTN	10:30	11:20	NP0503
					NTN	CNS	11:50	13:25	NP0503
Wednesday Westbound					Wednesday Eastbound				
Origin	Dest.	Dep.	Arr.	Flt #	Origin	Dest.	Dep.	Arr.	Flt #
CNS	NTN	13:20	14:55	NP0506					
NTN	ONG	15:25	16:15	NP0506					
ONG	DMD	16:40	17:20	NP0506					
DMD	ISA	17:45	18:45	NP0506					
Thursday Westbound					Thursday Eastbound				
Origin	Dest.	Dep.	Arr.	Flt #	Origin	Dest.	Dep.	Arr.	Flt #
CNS	NTN	12:20	13:55	NP0504	ISA	DMD	7:00	8:00	NP0507
NTN	ONG	14:25	15:15	NP0504	DMD	ONG	8:25	9:05	NP0507
ONG	BUC	15:40	16:20	NP0504	ONG	NTN	9:30	10:20	NP0507
BUC	DMD	16:45	17:20	NP0504	NTN	CNS	10:50	12:25	NP0507
DMD	ISA	17:45	18:45	NP0504					
Friday Westbound					Friday Eastbound				
Origin	Dest.	Dep.	Arr.	Flt #	Origin	Dest.	Dep.	Arr.	Flt #
CNS	NTN	12:35	14:10	NP0508	ISA	DMD	7:00	8:00	NP0503
NTN	ONG	14:40	15:30	NP0508	DMD	BUC	8:25	9:00	NP0503
ONG	DMD	15:55	16:35	NP0508	BUC	ONG	9:25	10:05	NP0503
DMD	ISA	17:00	18:00	NP0508	ONG	NTN	10:30	11:20	NP0503
					NTN	CNS	11:50	13:25	NP0503

NTN=Normanton
ISA=Mt Isa

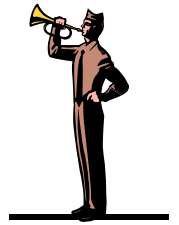
ONG=Mornington Island
CNS=Cairns

BUC=Burketown

DMD=Doomadgee



ANZAC DAY



Dawn Service was well attended this year with about 45 people present. Breakfast, as usual, was a big hit and thanks to Pam de Joux & Janet Creighton for rising extra early to prepare & cook. Thank you to Delta Company 51, Far North Queensland Regiment, from Mt Isa where Captain Peter Vesely accompanied by 5 soldiers presided over the official proceedings, including leading the march at the mid morning service. There was greater participation from the children this year and Aiden Portch & Adrienne Brady did a fine rendition of the "Ode" before the last post was played.

Winners of the ANZAC Day competitions are as follows:

Colour in competition - Prep to Grade 3 - *Yellagunjimurra Yanner*
 - Grade 4 to Grade 7 - *Shannyn Anderson*
Anzac Biscuit Bake off - *Elva Portch*

Thank you to all the volunteers who helped out on the day and to Burke Shire Council for sponsoring the breakfast & BBQ lunch and also to Mayor Annie Clarke for donating the rum for the Diggers on the day.



Parade led by Corporal Gavin Rake



Shannyn Anderson being awarded with her prize from Lance Corporal Jayne Visiesio



"Delta Company 51" on guard at the Cenotaph



Adrienne Brady reading the "Ode" at the mid morning service



Burketown Community joined in with the Allied Health team for a early morning walk and healthy breakfast on Friday 8 May supporting Heart Foundation Week 2009



Quick Facts on Heart Disease

- Australian women are 4 times more likely to die of heart disease than breast cancer
- Heart disease kills one in 6 Australians each year and one Australian dies almost every 20 minutes from the disease
- Only one in four women had spoken to their doctor about heart disease
- Heart disease is one of the leading causes of disability in Australia
- Stroke, another form of cardiovascular disease, is the second biggest killer of Australian women
- Cardiovascular disease is expected to affect one in four Australians by 2051.



HACC HAPPENINGS



We have spasmodic attendance at HACC at present, ranging from 6-8 ladies & two men, as well as three who are social support only - (13) in all. Our Gregory clients find it hard getting in to Centre Based Day Care, which I am endeavoring to find a solution too.

Activities in the last month include:-

- Pancake Day - We raised money for Uniting Care Australia
- Colonial Morning Tea - All HACC clients dressed in period costumes
- Social calls to Gregory clients
- "Exercises for the Elderly" - with Allied Health
- Bus trip to Gregory to socialize with our Gregory clients
- "Trash & Treasure" day to fundraise for our trip to "Camooweal Drivers Camp" in August
- Early "Mother's Day Morning Tea"

The next planned outing is to Leichhardt Falls early June.

Regular activities at Centre based day Care include :-

Tapestry/fancywork/weaving/art/ beads

Scrabble/cards/puzzles/quoints/croquet

Light exercises to dvd

For more information regarding Burke Shire HACC program please contact Pam de Joux Ph: 4745 5100

May Day Weekend - Gregory



Start of the short course canoe race.



Our local girls do us proud - Kym Toomby & Courtney Forshaw at the finish of the short course race. Courtney and Kym decided at Easter to go into the race and borrowed an old broken down Canoe from Murray (Billy Hangers) and with lots of sicaflex and spray paint made it reasonably floatable. The finished somewhere around the middle mark.

Bull Ride Results

McElligott Poddy Ride

- 1st - Roy Fisher 62
- 2nd - Dallas Kelly 60
- 3rd - Brenton Gregory 55

Butler Agencies Calf Scruffing

- 1st - Kim Toomby & Kim Schafer (brother & sister combo)
- 2nd - Roy & Colin Fisher (father & son)
- 3rd - Darcy Woods & John Carmody

Ringrose transport Open Bullock Ride

- 1st - Luke Mcneven 69
- 2nd - David Johnson 66
- 3rd - Peter Walden 65

Gregory downs Hotel Ringers Chance

- 1st—Josh Tillmouth 68

Forshaw Contracting Open Bull Ride

- 1st - Quinton Jurd 79
- 2nd - Colin Fisher 78
- 3rd - Ryan Betts 76



Race 4 Columbia Catholic College Class 4 Handicap
Winner - Bang The Castle (closest to rails) ridden by T Brummel starting at 26-1.



Allan & Bev Webber—Life members of the Gregory Downs Jockey Club.

RACE RESULTS

Race	Horse	Jockey
1	Polar Seas	J Rudd
2	Emgee Em Grand	D Price
3	Remington Steel	J Rudd
4	Bang the Castle	T Brummel
5	Fabulous Furlong	A Spradau



"Fashion on the Field" was hotly contested by the Men & Women.



BURKE SHIRE COUNCIL

List and Contact Details of Office, Depots, Senior Officers and Councillors

STREET ADDRESS: LOT 65 MUSGRAVE STREET BURKETOWN QLD 4830

POSTAL ADDRESS: PO BOX 90 BURKETOWN QLD 4830

Telephone: (07) 4745 5100 Facsimile: (07) 4745 5181

E-mail: burkesc@bigpond.com Website: www.burkeshirecouncil.com

BURKETOWN DEPOT:- PHONE: (07) 4745 5191 FAX: (07) 4745 5199

GREGORY DEPOT:- PHONE: (07) 4748 5624 FAX: (07) 4748 5630; GREGORY WTP:- PHONE: (07) 4748 3961

INFO CENTRE/MUSEUM:- PHONE: (07) 4745 5111 FAX: (07) 4745 5137

SENIOR OFFICERS:

ACTING CHIEF EXECUTIVE OFFICER – (Mobile – 0458 004 133) FRED de WAARD

MANAGER CORPORATE SERVICE – (Mobile – 0408 287 855) ZOE BELZ

ACTING WORKS MANAGER – (Mobile 0408 872 377) DENNIS KERR

WORKS FOREMAN (Mobile 0429 455 100) DOUG BEAUMONT

TOWN WORKS MANAGER – (Mobile 0428 513 518) COL BAKER

GREGORY CARETAKER (Business & Afterhours (07) 4748 3910) (Fax: (07) 4748 5698) ELVEE PORTCH

UTILITIES MANAGER BURKETOWN – (Mob 0437 724 479) BOB MARSHALL

WORKSHOP MANAGER – (Mobile 0437 730 348) BRETT HARRIS

RANGER – (Mobile 0429 623 312) RUSSELL CUNNINGHAM

COUNCILLORS:

Cr Annie Clarke (Mayor) PMB 8 BURKETOWN QLD 4830

Ph: 47 485 517; Fax: (07) 4748 5532*; Mobile: 0427 703 586; e-mail: annieclarke@bigpond.com

Cr Ernie Camp c/-Floraville Station BURKETOWN QLD 4830

Ph: 47 485 585; Fax: (07) 4748 5585; e-mail: erniecamp@bigpond.com

Cr Tonya Murray PO Box 59 BURKETOWN QLD 4830

Ph: 47 455 002; Mobile: 0427 112 035; Fax: (07) 4745 5204; e-mail: tonyamurray@bigpond.com

Cr Bill Olive PMB 2 BURKETOWN QLD 4830

Ph: 47 458 258; Fax: 47 458 225* (Hell's Gate); e-mail: bolive@bigpond.com

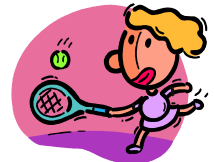
Cr Tracy Forshaw PMB 64 MOUNT ISA 4825

Ph: 47 485 521; Fax: 4748 5527*; e-mail: tracyforshaw08@bigpond.com

*Generator needs to be on for operation of facsimile



Tennis



We are now in Round 7 of the Burketown Tennis Tournament with 32 players nominated. Gregory tennis has commenced and they play every Thursday night. The Burke Shire Community Shield between Burketown & Gregory will be played in Burketown this year date TBA (probably in late July).

The Gulf Community Challenge are looking for teams from all Gulf communities to compete in Normanton on Saturday 13 June 2009. If you are interested in attending then please contact Cheryl Portch PH: 0428 578442 by Monday 8 June 2009.

AUSTRALIA, GULF OF CARPENTARIA - KARUMBA LAT 17° 30' S LONG 140° 50' E
TIME ZONE-1000 **TIMES AND HEIGHTS OF HIGH AND LOW WATERS** **YEAR 2009**

MAY		JUNE		JULY		AUGUST		SEPTEMBER	
Time m	Time m	Time m	Time m	Time m	Time m	Time m	Time m	Time m	Time m
1 0120 0.47 1215 3.92 FR	16 0140 0.67 1206 3.36 SA	1 0304 0.64 1303 3.02 MO	16 0221 0.95 1209 2.61 TU	1 0317 1.59 0519 1.55 1208 2.13 2000 0.90 WE	16 0224 1.89 0621 1.65 1049 1.91 1906 0.95 TH	1 0347 2.92 1922 0.60 SA	16 0248 3.03 1753 0.59 SU	1 0441 3.28 1909 0.65 TU	16 0423 3.57 1905 0.49 WE
2 0223 0.44 1301 3.81 SA	17 0228 0.70 1232 3.23 SU	2 0343 1.04 1312 2.68 TU	17 1217 2.37 2038 1.08 WE	2 0400 2.08 0804 1.91 1021 1.93 2013 0.70 TH	17 0257 2.09 1900 0.85 FR	2 0438 3.13 1939 0.59 SU	17 0350 3.31 1850 0.43 MO	2 0540 3.25 2000 0.70 WE	17 0537 3.43 2004 0.57 TH
3 0325 0.52 1342 3.59 SU	18 0309 0.82 1257 3.07 MO	3 1316 2.37 2130 1.08 WE	18 1200 2.12 2030 1.00 TH	3 0442 2.54 2030 0.60 FR	18 0341 2.51 1905 0.71 SA	3 0532 3.27 2005 0.58 MO	18 0504 3.52 1950 0.31 TU	3 0629 3.18 2050 0.82 TH	18 0643 3.27 2059 0.98 FR
4 0424 0.74 1414 3.31 MO	19 0330 1.03 1319 2.87 TU	4 0526 2.06 0827 2.00 1230 2.11 2136 0.90 TH	19 0533 2.07 2015 0.91 FR	4 0524 2.91 2045 0.60 SA	19 0433 2.91 1932 0.56 SU	4 0628 3.33 2044 0.56 TU	19 0623 3.66 2045 0.27 WE	4 0709 3.04 2137 1.02 FR	19 0733 2.94 2200 1.38 SA
5 0521 1.09 1439 2.98 TU	20 0048 1.27 1336 2.61 2251 1.31 WE	5 0604 2.56 2146 0.81 FR	20 0536 2.50 2016 0.78 SA	5 0609 3.18 2056 0.61 SU	20 0534 3.27 2017 0.39 MO	5 0719 3.33 2127 0.56 WE	20 0730 3.68 2134 0.34 TH	5 0743 2.83 2221 1.28 SA	20 0805 2.55 1531 1.86 SU
6 0622 1.55 1500 2.65 2306 1.51 WE	21 1331 2.34 2213 1.27 TH	6 0643 2.97 2147 0.79 SA	21 0610 2.93 2039 0.62 SU	6 0655 3.34 2114 0.61 MO	21 0640 3.55 2108 0.24 TU	6 0805 3.27 2209 0.61 TH	21 0827 3.55 2221 0.54 FR	6 0810 2.57 1710 1.68 1817 1.68 SU	21 0146 1.73 0801 2.15 1436 1.68 2134 2.32 MO
7 0630 2.06 0828 2.04 1501 2.33 2306 1.35 TH	22 0804 2.17 2130 1.18 FR	7 0721 3.25 2141 0.77 SU	22 0656 3.30 2116 0.45 MO	7 0742 3.39 2145 0.57 TU	22 0745 3.75 2158 0.13 WE	7 0846 3.15 2248 0.72 FR	22 0915 3.27 2311 0.86 SA	7 0222 1.53 0830 2.26 1545 1.60 2129 1.87 MO	22 0443 1.78 0756 1.83 1452 1.47 2222 2.71 TU
8 0717 2.55 2306 1.25 FR	23 0706 2.57 2121 1.03 SA	8 0800 3.40 2152 0.72 MO	23 0750 3.60 2204 0.28 TU	8 0828 3.38 2225 0.54 WE	23 0844 3.81 2246 0.12 TH	8 0923 2.97 2322 0.90 SA	23 0953 2.89 SU	8 0339 1.60 0844 1.95 1554 1.51 2235 2.14 TU	23 1505 1.30 2302 3.03 WE
9 0755 2.95 2237 1.17 SA	24 0727 2.98 2132 0.84 SU	9 0841 3.46 2225 0.66 TU	24 0846 3.79 2255 0.15 WE	9 0913 3.32 2305 0.53 TH	24 0936 3.73 2333 0.24 FR	9 0952 2.72 2347 1.13 SU	24 0043 1.27 1015 2.46 1649 1.60 2223 1.79 MO	9 0452 1.63 0659 1.67 1602 1.43 2304 2.43 WE	24 1315 1.12 2342 3.26 TH
10 0828 3.24 2216 1.05 SU	25 0802 3.33 2159 0.64 MO	10 0924 3.44 2308 0.61 WE	25 0941 3.86 2345 0.09 TH	10 0955 3.20 2345 0.57 FR	25 1022 3.49 SA	10 1009 2.44 MO	25 0359 1.49 1015 2.07 1645 1.32 2343 2.21 TU	10 1307 1.22 2338 2.74 TH	25 1345 0.97 FR
11 0901 3.43 2234 0.93 MO	26 0849 3.62 2242 0.46 TU	11 1006 3.38 2353 0.56 TH	26 1031 3.80 FR	11 1030 3.04 SA	26 0020 0.50 1100 3.13 SU	11 0008 1.37 1016 2.15 1728 1.34 TU	26 0537 1.65 1004 1.76 1705 1.08 WE	11 1342 0.98 FR	26 0021 3.39 1427 0.85 SA
12 0938 3.54 2311 0.83 TU	27 0941 3.81 2336 0.31 WE	12 1045 3.28 FR	27 0033 0.15 1117 3.59 SA	12 0018 0.67 1053 2.83 SU	27 0118 0.88 1123 2.70 2033 1.40 2122 1.40 MO	12 0205 1.65 0500 1.51 1015 1.88 1737 1.20 WE	27 0031 2.58 1725 0.91 TH	12 0021 3.04 1430 0.78 SA	27 0102 3.44 1514 0.77 SU
13 1017 3.56 2357 0.76 WE	28 1033 3.89 TH	13 0038 0.55 1117 3.15 SA	28 0121 0.35 1154 3.26 SU	13 0047 0.83 1104 2.61 MO	28 0408 1.26 1127 2.28 1824 1.18 TU	13 0025 1.97 0608 1.63 0830 1.69 1743 1.09 TH	28 0115 2.88 1732 0.81 FR	13 0111 3.30 1531 0.62 SU	28 0146 3.43 1605 0.74 MO
14 1058 3.53 TH	29 0031 0.23 1123 3.84 FR	14 0119 0.60 1138 2.98 SU	29 0208 0.67 1215 2.85 MO	14 0114 1.05 1113 2.38 1903 1.21 TU	29 0118 1.81 0540 1.58 1115 1.94 1833 0.91 WE	14 0104 2.33 1726 0.95 FR	29 0159 3.08 1730 0.74 SA	14 0208 3.48 1644 0.50 MO	29 0234 3.36 1700 0.78 TU
15 0047 0.70 1135 3.46 FR	30 0126 0.24 1207 3.66 SA	15 0155 0.74 1154 2.81 MO	30 0308 1.10 1215 2.45 2016 1.15 TU	15 0053 1.34 0139 1.34 1117 2.13 1900 1.05 WE	30 0216 2.24 1851 0.72 TH	15 0151 2.70 1715 0.77 SA	30 0247 3.21 1745 0.68 SU	15 0312 3.57 1759 0.44 TU	30 0324 3.25 1757 0.90 WE
	31 0216 0.37 1243 3.38 SU				31 0301 2.62 1908 0.63 FR		31 0342 3.27 1820 0.65 MO		



New Moon



Full moon



Last Quarter



First Quarter

****Please Note****

For Burketown tide times - add the following:-

1Hr - Mouth of Albert

4hrs - Jetty

5hrs - Bridge