



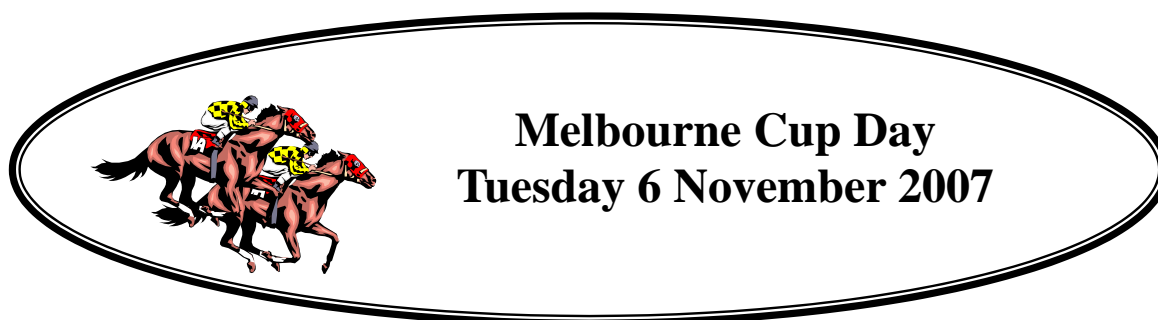
BURKE SHIRE COUNCIL

NEWSLETTER

Edition 12 - October/November
(Issued on 3 October 2007)

The tourist season is once again coming to an end, which means hello to the glider pilots who are chasing our spectacular Morning Glories. As its coming to the tail end of the year, everything is starting to wind down but there are still events happening so please continue to read the notice boards advertising these.

Cheryl Portch



Melbourne Cup Day
Tuesday 6 November 2007

Some Key Council Dates

Ordinary Meeting of Council (October)	18 October 2007
Ordinary Meeting of Council (November)	15 November 2007
Melbourne Cup Day (Public Holiday within Burke Shire)	6 November 2007
Deadline for contributions to next newsletter	24 November 2007

CURRENT PUBLIC NOTICES

All public notices are displayed at Nowlands, Burketown Post Office, Burketown Pub, Burketown Health Centre, Gregory Downs, Moungebibi and the Shire Office.

Dog Baiting
Mosquito Fogging
Calico Bag Give Away
Fines for Dogs Found at Large
Council Meeting Dates for 2007



Noogoora Burr *Xanthium pungens*



Noogoora burr is another weed that we in the Gulf have to contend with, although it is not declared under the *Land Protection (Pest and Stock Route Management) Act 2002*.

Description

This plant is an erect, annual herb, to 205mm high, with blotched purple stems. Leaves are dark green on the upper surface, similar in shape to grape leaves, 15cm in diameter, and roughly textured with minute bristles. Flowers are inconspicuous, both male and female occurring in leaf axils towards the end of the branches. Flowers develop into hard, woody, spiny burrs, 1.2 cm to 2 cm long with numerous hooked spines

The problem

Noogoora burr is found along river and creek flats, on roadsides and in pasture lands following seasonal rain of floods. The bur readily attaches itself to anything, person, animal or vehicle who more through plants of Noogoora burr, in sheep country it contaminates wool, significantly reducing its value. This plant is a serious competitor in pastures and summer crops. The first two leaves that appear when a seed germinates are poisonous to domestic stock, causing death if eaten.

Distribution

Noogoora burr is widespread in Queensland, occurring in tropical regions as well as the central and western regions, where it prefers alluvial flood plains.

Control

As this plant is an annual, if seedling can be prevented, infestations will be reduced. Cultivation or hand pulling for isolated plants is effective, if performed before flowering or burr formation. Spraying with 2,4-D or MCPA before flowering will give favourable results. As plants mature, higher rates are necessary. Some level of control has been achieved with biological control agents including stem boring and stem galling insects, and a rust fungus, (*puccinia xanthii*). This form of control has been more effective in tropical areas where temperatures and moisture conditions are favourable.

Ranger's Activities

- **Rubbish Bins** are provided in most of the favourite fishing/ camping spots – please place your rubbish in the bins provided or bring your rubbish back to one of the excavated rubbish dumping points and leave the area clean and tidy for the next person.
- **Weed Spraying** (Rubber vine, Calotrope, Mesquite and Prickly acacia) is ongoing in problem areas on Council controlled land and Council road reserves.
- **1080 Baiting** was carried out throughout the Shire in May and the next or second round of baiting will start on the 15 October (Carpentaria Shire will also be baiting at this time). If you take the family dog onto one of the properties that have participated in baiting be careful as some of the first lot of baits may be still active, also some properties are using commercially prepared baits and are baiting outside our scheduled baiting rounds. Those properties that have recently baited will have 1080 signs on all entrances to their property.
- **Burketown Cemetery** - recent unmarked graves in the cemetery have been identified and we have now obtained brass plaques that have been placed on them. These are placed flush with the ground as in a lawn cemetery and is facilitating easier mowing and maintenance around the sites. We are also working on getting a sign made that has listed the cemetery register and a short history and to be placed in the gazebo at the cemetery.
- **New Directional Road Signs** have been erected at all the major intersections in the Shire – these have been well received by the traveling public although two at the Bowthorn turnoff on Doomadgee East Road have been vandalized.
- **Burke Shire Entrances Welcome Signs** – Working on the design of new welcome signs to be placed at the four road entrances to the Burke Shire.

WILD DOG CONTROL COORDINATED 1080 BAITING PROGRAM COMMENCING 15 OCTOBER 2007

Council, together with local pastoral property owners/managers, are undertaking a wild dog control coordinated 1080 baiting program in the Burke Shire area from Monday 15 October 2007.

Properties that have participated in the baiting program will have warning signs posted at all points of entry to their property.

Whilst baiting will only occur on private pastoral properties, outside a 10km radius of the townships of Gregory and Burketown, and in areas that will be well signed, residents and visitors to the area are being advised to take caution with domestic pets during the baiting program. It is recommended that any such pets be restrained during the program and for at least a month afterwards.

Any specific enquiries in respect of the baiting program can be directed to Council's Ranger, Russell Cunningham, at this office.



BARRAMUNDI SEASON CLOSES

Midday Thursday 4 October 2007

Reopens Midday Tuesday 29 January 2008

Library Art Gallery

Paintings and drawings created by the Burke Shire Children are currently on display in the Library.



Come and have a look at how talented our Shire children are.





Burke Shiraz Library Author Review

Tara Moss

Feature author for October/November

About – Tara Moss

"Tara Moss is much more than a pretty face. She's an international best-selling author, ambassador, television host, and reptile-wrangler...she may well become one of the world's best-sellers."

-World Literature Today, 2006

Tara is the author of the international bestselling crime novels – *fetish*, *split*, *covet* and *Hit*, published in thirteen countries in nine languages, helping to make the young author, "...one of Australia's most successful female authors in any genre." (Quote – Crime Factory), and winning fans around the world, "Her novels are completely entertaining and gripping from beginning to end." (Quote – Hugh Jackman).

Writing has been a lifelong passion for Moss, who began penning gruesome "Stephen King inspired" stories for her classmates when she was only 10. Moss went on to a successful international career as a model before pursuing professional writing, first earning a Diploma From the Australian College of Journalism in 1997, and in 1998 winning the Scarlet Stiletto Young Writers Award for her story, *Psycho Magnet*. Moss started writing her successful debut novel, *Fetish*, when she was just 23. Her crime novels have been nominated for both the Davitt Award and the Ned Kelly; two of Australia's most prestigious honors.

Born in Victoria, British Columbia, Moss is now a proud dual Australian/Canadian citizen, and resides in Sydney.

The following 4 books will be available for loan in October

* *Covet*

* *Fetish*

* *Hit*

* *Split*

Fetish

Tall, blonde and beautiful it's no surprise that Canadian Makedde Vanderwall is a model. What is surprising is her street-smart ways and her own recognition that modeling is only a stopgap career, a lucrative means to fund her tuition for a degree in forensic psychology. But more surprising, and Disturbing, is that while on assignment in Sydney, Australia, Makedde finds herself in the middle of a grisly, sensational hunt for the "Stiletto Murderer". A serial killer who brutally murdered Makedde's best friend and may see Makedde as his next fashion victim. Who is this murderous monster with the penchant for sexy shoes? The world of fashion takes on sinister tones, a photographer who get off on snapping photos of dead bodies; beautiful women with rich but mysterious sugar daddies; and bottom feeders who cruise the murky ocean of high fashion and low morals. And now, seemingly deserted by the one cop who can save her, Makedde is a girl on the edge of unimaginable terror, in a place where perfect beauty is transformed into darkest death...

All the above information has been sourced from "www.taramoss.com"



Since our last newsletter the Doomadgee HACC clients come and had morning tea and did some arts & craft with us for the HACC week activities. Kay Cavanagher from Frontier Services also visited us.

We have our Centrebased day care activities at the old church on Tuesday, Wednesday & Thursday mornings at 10:00am to 12:00pm. If you would like to join our HACC program, or know of someone who would like to join, please contact Amanda Douglas at the Council Office on Ph:4745 5100

2007/08 Dog Registrations

Only \$2.20 per dog.

Registration forms are available at the Council Office.



Burketown Rainfall

August - 3.4mm

September - .8mm

Burketown Aquatic Facility Update Report

Construction is progressing fine without problems to date. All going well it will be completed by the end of October 2007 so hopefully will be open to the public shortly after this. Once a definite opening date is known a public notice will be issued.

RECYCLE OLD PRINTER CARTRIDGES

by putting them in the box provided at Burketown Post Office

Council Meeting Minutes

Council meeting minutes are produced within 10 days following each Council meeting and are available free of charge to all rate payers and residents. If you are not on the mailing or emailing list for the minutes and want to be, please contact the Council office and let us know. They are also posted to our website:- www.burkeshirecouncil.com

TV TIMES

A copy of the TV Times is available to be picked up from the Council office every Friday after 10:00am. Also available on website - www.ourguide.com.au



Library Talk September holidays

Come in, colour in a picture, read a book or watch a DVD. There will be lots of new



Membership for the library and Sports Library is free



If there are any books which you would like for us to order in, send me a list and I will do my best to get them.

Library Hours – 8.15am to 4.15pm weekdays

See you in the Library - Jenny



QLD RECREATIONAL FISHING RULES & REGULATIONS GUIDE

is available at the Council Office and the Tourist Information Centre.

For more information on this guide please contact Caroline Dalton Ph : (07) 3225 1038 or email: Caroline.Dalton@dpi.qld.gov.au

**TIDE TIME CHARTS
ARE AVAILABLE FROM THE COUNCIL
OFFICE OR CAN BE ACCESSED ON
THE DPI FISHERIES WEBSITE**





COUNCIL WORKS RELATED NEWS & ACTIVITIES



CURRENT MAJOR WORKS

Construction of Gregory Water Supply - final commissioning is currently underway

Upgrading & sealing of Gregory Airport - now operational - fencing completed

Seniors Housing Development - to complete landscaping. Units are available for occupation

Burketown Water Treatment Plant - complete upgrade works, including desludging of the second pond

Burketown Sewerage Treatment Plant - complete upgrade works associated with the Blivet unit

Flood damage repairs from January/March/April 2006 event

Road sealing - including 1.5km Truganini Road, Cemetery Road, unsealed shoulders in Musgrave Street and Burke Street extension

Wills Developmental Road upgrading - Main Roads/RoadTek are back onsite to continue working on gravel & then seal section between Running Creek & Barkly Creek

Aquatic facility for Burketown - under construction

Doomadgee Road East - Gravel resheet & then sealing 15 km from chainage 35km to 50km west of Wills Development Road

Doomadgee Road West—Resheet & seal from 9.9km from Kingfisher turnoff to 17.7km.

FUTURE MAJOR WORKS & WORKS IN PLANNING STAGE

Gregory - Lawn Hill Road - upgrade and seal some sections (approx. 7 km)

Introduction of a Waste Management Plan, including recycling

Permanent repair of China Wall Culvert on Truganini Road - to be done after upcoming wet season

Albert River Boat Ramp & Pontoon - to revisit proposal

New Albert River Bridge - tenders close 5 October 2007

Barramundi Fingerling Growout Facility - concept plan, design & costing currently being finalised

Kids water play feature for Burketown - subject to funding application

Maintenance Works on Wills Development Road & Doomadgee Road East.

PUBLIC NOTICE

SCHEDULE OF ORDINARY MEETINGS FOR 2007

Following is a schedule of dates for the
remaining Ordinary Meetings of the Burke Shire Council for the year 2007:-

Thursday 18 October 2007

Thursday 15 November 2007

Thursday 13 December 2007

All meetings are to be held in the Council Chamber in the Shire Office, Musgrave Street, Burketown, and are scheduled to commence at 9:00am

2007/08 BUDGET

Council at their meeting on 16 August 2007 adopted the 2007/08 budget and set the rates & charges for the 2007/08 financial year.

The following comments provide a summary of the 2007/08 budget and a copy of the 2007/08 budget document is available for review at the Council office):-

- ⇒ Total cash budget of \$18.2 million, consisting of operating expenditure of \$11.2 million and capital expenditure of \$7.0 million. The \$18.2 million expenditure is funded via a number of means, including \$2.6 million in net rates and utility (water, sewerage & garbage) charges; \$2.2 million in capital grants; cash reserves of \$1.7 million; internal charges (such as plant hire) of \$1.9 million; flood damage repair grant of \$4.5 million; and financial assistance grant of \$1.9 million.
- ⇒ Rates & utility charges increases have been kept to a minimum. The average is 3.0%, being equivalent to the CPI increase for 2006/07.
- ⇒ Council remains debt free (i.e. has no loans and/or borrowings), all liabilities such as creditors and employee provisions remain fully funded and ending 2007/08 with financial cash reserves of \$5.6 million.
- ⇒ Major capital works projects include:-
 - Working with Zinifex Century Mine to seal upgraded sections of the Gregory-Lawn Hill Road (\$1,150,000)
 - Sealing works at Gregory either side of the WDR outside the Gregory Hotel (\$125,000)
 - Complete the sealing roads of around Burketown (including proposed sealing of Cemetery Road, first 1.5km of Truganini Road, extend Burke Street to the north and extend Gregory Street to the west) (\$157,000)
 - Upgrade and sealing works of 15km of Doomadgee East Road (\$750,000)
 - 20kms bitumen resealing works on various roads (\$200,000)
 - Upgrade and sealing works of 7km of Doomadgee West Road (\$375,000)
 - Complete the widening of the Nicholson River Causeway at Doomadgee (\$200,000)
 - Parks & gardens improvements at Gregory (\$50,000)
 - Hit up walls at the Burketown & Gregory tennis/basketball courts (\$30,000)
 - Further staged footpaths at Burketown & Gregory (\$75,000)
 - New & replacement plant (\$522,000)
 - Dumping points for portable caravan & camping van toilets contents – one in Gregory & one in Burketown (\$20,000)
 - Aquatic facility in Burketown (\$700,000)
 - Proposed kids water feature in the Morning Glory Park (\$245,000)
 - Rubbish tip improvements at Burketown & Gregory (\$350,000)
 - Water main to the Burketown Airport (\$43,000)

continued

- Improvements to Burketown water supply infrastructure (\$64,000)
- Improvements to Burketown Rodeo Ground public toilets (\$40,000)
- Wash down bay in Burketown (\$50,000)
- Extend hardstand & taxiway area Burketown airport (\$60,000)
- New boundary fence Gregory airport (\$50,000)
- Bulk fuel tanks (\$40,000)
- New packaged water treatment plant in Burketown (\$400,000)
- Complete the Gregory water supply (\$100,000)
- Complete the pensioners' housing development (\$50,000)
- New lights Burketown courts (\$30,000)
- Improvements to Albert River wharf and boat ramp area (\$120,000)

⇒ Some operational works projects include:-

- Complete the flood damage repairs from the January/March 2006 event (\$4,500,000)
- Repairs to China Wall (\$200,000)
- Improvements to Station Access Roads (\$200,000)
- Improvement to street drainage around Burketown (\$171,000)
- Weed & pest control initiatives in accordance with the Pest Management Plan (\$64,000)
- Regional Arts Development Fund activities (\$8,000)
- Establishment of fingerlings growout tanks (\$75,000)
- Recording of verbal history (\$40,000)
- Continuation of the Home & Community Care program (\$119,000)
- Development of a waste management & recycling program (\$50,000)
- Upgrade of Burketown Kindergarten kitchen (\$12,000)

2007/08 RATES

2007/08 Rate notices will be issued on 22 October 2007.

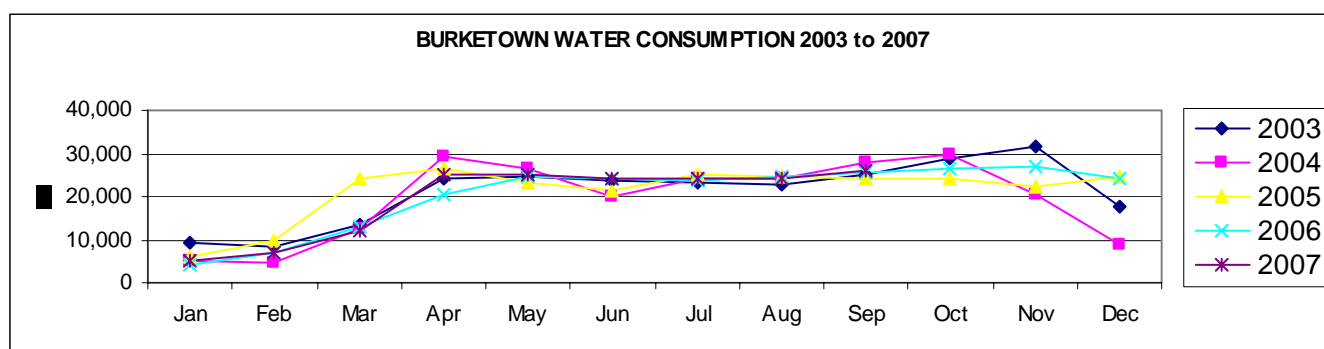
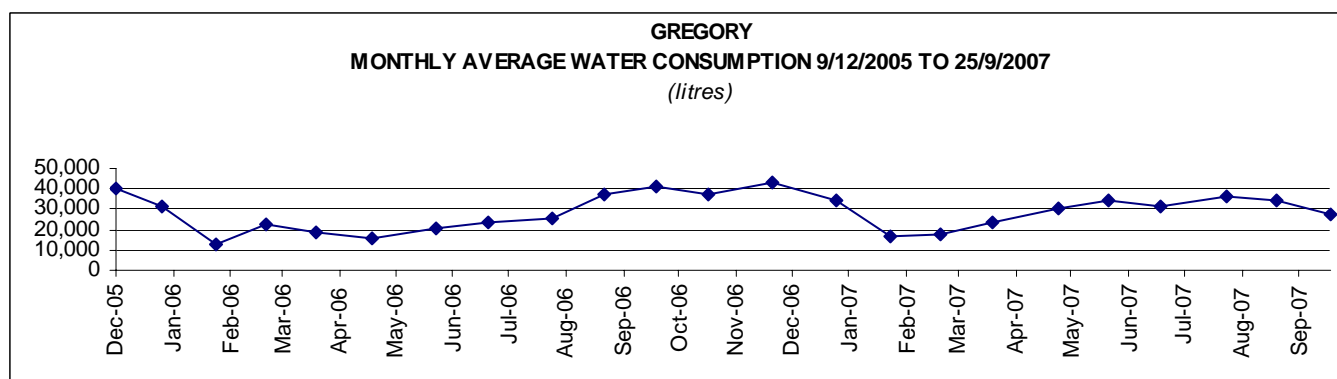
**The due date for payment (to receive the 15% discount) will be
21 November 2007.**

Stolen Solar Panel & Batteries

Some thoughtless person has stolen the solar panel and batteries from the wind sock at the Gregory airport. This act whilst inconvenient, also penalizes the whole community as without the lighted windsock the RFDS cannot land in a night time emergency. The Burketown Police are investigating this theft and should any member of the public have any information, please contact them on (07) 4745 5120.

GREGORY WATER CONSUMPTION

Date of Reading	Average Daily Consumption Over the Month	Meter Reading
	<i>litres</i>	<i>litres</i>
29-Aug-06	36,766	6,081,675
26-Sep-06	41,214	7,235,668
24-Oct-06	37,297	8,279,981
28-Nov-06	42,889	9,781,079
2-Jan-07	34,533	10,989,721
31-Jan-07	16,224	11,460,205
27-Feb-07	17,491	11,932,455
27-Mar-07	23,997	12,604,379
1 May- 07	30,873	13,877,462
15-May-07	35,821	14,359,597
29-May-07	34,068	14,750,689
26-Jun-07	31,179	15,623,499
31-Jul-07	34,983	16,709,745
27-Aug-07	34,066	17,735,595
Total Consumption		17,695,704
Average Daily Consumption		28,268



BURKETOWN WATER CONSUMPTION (kilolitres)

Year	Jan	Feb	Mar	Apr	May	Jun	Jul	Aug	Sept	Oct	Nov	Dec	TOTAL
2003	9,319	8,173	13,696	24,222	24,614	23,518	23,092	22,661	24,888	28,854	31,575	17,894	252,506
2004	5,007	4,700	12,470	29,295	26,660	20,017	23,989	24,081	27,720	29,942	20,591	8,669	233,141
2005	5,923	9,569	24,149	26,580	23,482	21,419	25,317	24,683	24,143	24,295	22,554	24,655	256,769
2006	4,283	6,876	12,879	20,685	24,684	24,267	23,567	24,582	25,796	26,500	26,500	24,000	245,119
2007	5,000	7,000	12,000	25,000	25,000	24,000	24,000	24,000	26,000				172,000

Consumption since October 2006 are estimates only

HELP US TO REDUCE THE USAGE OF PLASTIC BAGS!



Council has a continuing aim of reducing plastic bags use in our Shire. By reducing the usage of plastic bags it helps not only with less litter but also with the protection of our wildlife and marine life.

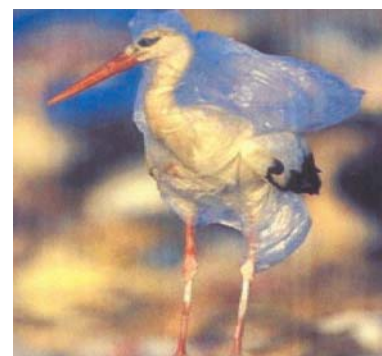
In October 1995 every household (rural & urban) in the Shire was issued with five calico bags so as to help them reduce the need to use plastic bags. This has been successful however so as to keep this awareness ongoing Council would like to again offer all permanent households in the Shire five calico bags free of charge. This offer is open until 30 November 2007.

For those residents that are interested the calico bags can be collected in person at the Shire Office in Burketown or alternatively for those that live in the Shire outside of Burketown and cannot conveniently collect the bags in person, arrangements will be made to mail the bags out to you.

For more information, including to check whether you qualify or not, please contact Cheryl Portch at the Shire Office on (07) 4745 5100.



Photo courtesy of Ron Prendergast, Melbourne Zoo



TRASH & TREASURE MARKET



Our first ever 'Trash & Treasure' market was held on Saturday 25 August. There were 9 stalls selling their wares which included, pot plants, household goods, clothes, show bags, Nutrimetic products, Avon products, jewellery. & sausage sizzle. Sales were boosted by the influx of 'Normanton Stingers' supporters on their way through to Doomadgee for the football grand final. If there is enough interest in the community I will hold another Trash & Treasure Market in November 2007. To register your interest please contact Cheryl Portch on Ph: 4745 5100 during work hours, Ph; 4745 5271 after hours or Mob: 0428 578442.

Wills Developmental Road Project Update for August

A progress meeting for the Wills Alliance Project was held on 24th August 2007. This project update is a summary of the key issues discussed and those included in the Project Managers report for August.

Throughout this project update works between Running Creek and Barkly Creek are referred to as Stage-1 and works between Barkly Creek and Brookdale are referred to as Stage-2.

KEY ISSUES

Key issues for this month were:

- Material supply from Forshaw Contracting has been delayed due to plant breakdowns. A new crusher has been installed, but there have been some initial teething problems delaying manufacture and affecting quality.
- Delivery of pavement material from Northern Project Contracting has been delayed due to a shortage of transport trucks. All material is in stockpile at Century Mine awaiting delivery.
- As a result of the material delivery delays the work crew has been reassigned to work on the Gilbert River project for a few weeks to enable delivery to catch up. This will minimise the financial impact on the project.
- The Stage-2 Project Alliance Agreement has been sent away for financial approval, but there are some delays being experienced in getting it approved. Main Roads will follow up with this to ensure an outcome is reached as soon as possible.
- The ALT has adopted a 150mm base and 150mm sub-base pavement configuration for Stage-2. An alternative to lime stabilise the subgrade and use a 200mm layer of pavement material was also considered. This option will not be used at this stage due to issues around availability of lime.
- The Cultural Heritage Corridor Agreement (with Gangalidda and Garrawa People) for State Controlled Roads has been signed and site surveys between Gregory and Burketown have commenced this week. This will help minimise the chance of delays as a result of Cultural Heritage on future packages of work.

TIME

Stage-1

Original Date of Commencement	06 Nov 06
Commencement Date	06 Nov 06
Original date for Practical Completion	14 February 07
Anticipated date for Practical Completion	10 October 07

WORKS PROGRAM

At present the works on stage-1 will be completed by the 10th October 2007. Stage-2 works can commence when resources are available from Stage-1 works. Commencement of Stage-2 works also relies on the completion of the Cultural Heritage assessment and financial approval being received.

DESIGN

The ALT has adopted a 150mm base and 150mm sub-base pavement configuration for Stage-2. The alternative is to lime stabilise the subgrade and use a 200mm layer of pavement material. This option was considered but due to issues around availability of lime it will not be used at this stage.



Burketown Vacation Care



Held from
24 September to
5 October 2007
Closed for lunch

*Located at the
Shire Hall
Further details phone
G\$RA Inc 4745 1010*

CRASH! GAMES! PAINT! SPORT!

Jordan and
Matthew will
be back,
Linda will
have some
new ideas
and we have
lots of fun in
store with
David from
Jump Rope
for Heart.
Look for-
ward to see-
ing you all.

Active After School Care

Cheryl Portch & Jenny Williams are co-ordinating the Active After School Care program for Term 4. Activities will be held at the Burketown Tennis Courts. All school children within Burke Shire are welcome to attend. (They need to complete a consent form first before joining. Consent forms can be completed by parent/guardian on the day.) For more information please contact Cheryl or Jenny on details below:- Cheryl Ph: 4745 5271 Mob: 0428 578442

Jenny Ph: 4745 5068

Below is the calendar for activities planned for in Term 4.

TUESDAY Cheryl Year Prep to Year 2 5:00pm - 6:00pm	WEDNESDAY Cheryl & Jenny Years Prep to Year 7 5:00pm - 6:30pm	FRIDAY Cheryl Years 3 to Year 7 5:00pm - 6:30pm
9 October Games	10 October Soft Ball & T Ball	11 October Basketball
16 October Tennis	17 October Badminton	18 October Cricket
23 October Games	24 October Kanga Cricket	25 October Tennis
30 October Tennis	31 October Games	1 November Softball
NO ACTIVITIES Melbourne Cup Day	7 November Games	8 November Walking—walk to cemetery
13 November T-Ball	14 November Cricket	15 November Basketball
20 November Games	21 November Tennis	22 November Games
27 November Tennis	28 November Softball & TBall	29 November Tennis
4 December Badminton	5 December Games	6 December Cricket

VMR NEWS

The last month in VMR has been busy with our Friday night trading and Sunday BBQ's. The BBQ's will probably only continue for another month as Di & Lenny will be returning to Hat Head for the wet season. Financially the club has made significant headway with the president and secretary finalizing the books for the past financial year. Both must be congratulated for their persistence in completing the task. Wednesday night training is going well with the people participating all learning something new each night. Come along and test your knowledge. You may well learn something which may save your life or someone else's! Currently a marine engineer is looking at the structural integrity and buoyancy of the Firefly 11 to confirm the hull is able to take new motors which are being acquired. The zone meeting was cancelled at Karumba due to Mornington Island not being able to attend. It is being rescheduled for November.

Until next month... Safe Boating!

Paul Poole
Training Officer
VMR Burketown





Correction

Liam Hookey-Smith presenting Her Excellency, Quentin Bryce with the Burketown State School Rugby League Polo Shirt. (not Murrandoo Yanner as stated in previous newsletter)

SUNDAY SCHOOL & NIGHT GOSPEL MEETINGS BURKETOWN CHURCH

Dates

- 14 October 2007
- 28 October 2007
- 11 November 2007
- 25 November 2007

Times

Sunday School 9:30am
Night Gospel 7:30pm

Contact

Doug & Faye Jones
Ph: (07) 4745 5058

Burketown Health Centre

**Womens Health Nurse will be visiting
Burketown Health Centre 25 October 2007**

**Dentist will be in Burketown from
Wednesday 10 October to Friday 12 October
Phone 4744 4407 for appointments**

- ◆ Bring a current Qld Issued health Care Card or Pension Care Card with you for free dental treatment
- ◆ Private fee-paying patients will also be seen. Cash/cheque on the day Please (No Accounts, No EFTPOS).

**North West Queensland Primary Health care.
Phone 4749 4615 for appointments.**

October 11 & 12	Physiotherapy	Dietitian	Podiatrist
November 1 & 2	Psychologist	Occupational Therapist	Speech Therapist
November 22 & 23	Dietitian	Physiotherapy	Podiatrist

Gregory Grapevine

RFDS Clinic Gregory (Doctor & Child Health) Every Fortnight

From 9am onwards

- Thursday 4 October
- Thursday 18 October
- Thursday 1 November
- Thursday 15 November
- Thursday 29 November

Gregory School News

- **School Holidays**
Commence on Saturday 22 September to Sunday 7 October. School recommences on Monday 8 October.
- **Gregory Active After School Community Playgroup - Wednesday**
Every Wednesday from 2:30pm to 4:00pm
All children welcome from birth to 12 years old.
Healthy afternoon tea provided
Supervised fun, arts & craft and sports.
Ring Meegan Brown (Yeldham Stn) Ph: 4748 5525 or Gregory School Ph: 4748 5652 for more Information
- **School Lunches**
50c per piece of fruit, \$2 per day or \$6 per week or \$50 per student per term. See Rebecca to organise.

Social Tennis – Thursday Night

- Starts around 6:30pm every Thursday night.
Bring along meat/bread to share on the BBQ

CWA – Gregory Branch

- **How Many Grids To Gregory** cookbooks are available for sale - \$8 each or for local Burke Shire residents and business a discount of 20 books for \$120 (a saving of \$2 per book) – contact either Sue Clarke (Ph: 4748 5575) or Tess Arnold (Ph: 4748 5584)

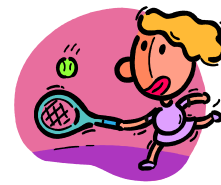
Annual Horse Sports & Family Fun Day – cancelled due to Equine Flu.

Gregory SES

- To join please see/ring Ian Forshaw Ph: 4748 5521



**BURKE SHIRE COMMUNITY TENNIS SHIELD
GAME & BBQ**



Burketown & Gregory will play the annual 'Burke Shire Community Tennis Tournament' in Burketown on Saturday 20 October at 4:30pm. Representing Burketown is Amanda Wilkinson & David Marshall, who will challenge John Clarke & Tess Arnold from Gregory for the "Shield" which Gregory won last year. Presentation for the Burketown Tennis competition & Burke Shire Community Shield will take place immediately after the game, followed by a free BBQ for all players & fill-ins that participated in the 2007 tennis competitions for both Gregory & Burketown.

**Come and cheer your side to victory, then play social tennis after .
Racquets & balls will be provided.**



FIRE OFFICER



Hi all, Once again we are in the middle of the fire season with a number of wildfires starting with high temperatures low humidity and strong winds to drive them. If you haven't already placed in fire breaks around your properties now is a good time to do so. You should also service all your fire equipment so it is ready for use when you need it or in case your neighbour needs it.. We have already had a large fires in the areas of Clifdale, Westmorland and Wentworth with a large portion of area being burnt. With this I wish to thank the fire teams who worked on these fires. They put in long days and many man hours and were able to contain the fires and save these properties from complete pasture losses. We had fire units from Burketown Rural Fire Brigade, Gulf Fire Management Project, National Parks at Lawn Hill, Settlement Creek Rural Fire Brigade and Put Em Out Rural Fire Brigade along with the Burke Shire Council working on controlling these fires. I would like to thank Leona and Bill Olive for all the help and support with all our meals and accommodation which were provided for all the fire crews over the 11 days of this fire. once again guys, thankyou! I would also like to thank Burke Shire Council for supplying fuel to keep all the fire units out on the ground and the Council workshop in keeping all our fire equipment serviced and giving us a better tourist attraction than the morning glory, with Benny Kumsing on a grader. We should make postcards of him on his grader, well done mate! Time to sign off with another big thanks to all crews and to anyone else that I may have forgotten.

'Working Together To Protect Our Gulf Communities'

Kevin Anderson
Fire Project Officer

Fax: (07) 4745 5204

Ph: (07) 4745 5132

Sat phone: 0147141322 Email: kanderson@clcac.com.au

Arts & Craft Show 2007

Burke Shire Arts & Craft Show 2007 was deemed a success with 115 people nominating and displaying their exhibits. The auction raised \$2,318.35 with all proceeds going to RFDS. Local organisations that utilised the Arts & Craft Show for fundraising raised over \$1,500.00 for their various groups, some of which was also donated to RFDS. Thank you to all who donated their time, money or expertise to make this show the success that it was. A tentative date of 16 August 2008 is set aside for next years Arts & Craft Show.

Greg Portch won Grand Champion for his "Bent Billy" in the Inventions section. The "Bent Billy" was also nominated as the "Peoples Choice Award".



Picture of Sea Eagle made out of wine corks, created by Lee Davis - Sweers Island.



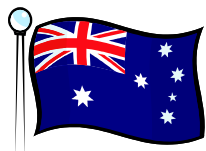
"Peoples Choice Award"
locally made by Frank Potter.



Faye Jones won Grand Champion for her decorated cake in the Cooking section.



Pam de Joux won Grand Champion for her painting of "The Albert Bridge" in the Art section.



2008 Australia Day Awards

Call for Nominations

Council invites interested persons and organisations to submit nominations for the 2008 Australia Day Awards (Local Government Section). Expressions of interest are also being sought from individuals to represent the community on the awards judging panel, which will reflect the various interests and constituencies of the community.

The three award categories for this year are: *Citizen of the Year*; *Young Citizen of the Year*; and *Junior Sports Award*. The awards are part of a family of awards coordinated through the National Australia Day Council.

The *Citizen of the Year* awards are presented to individuals whom have made a noteworthy contribution to the community during the current year and/or given outstanding service to the local community over a number of years. Whilst the awards recognise outstanding personal achievement they also celebrate the remarkable contributions individuals are making to their community.

The *Junior Sports Award* is presented to an individual who has made a noteworthy record of achievement in sport or has made a significant contribution to sport as a coach, official or administrator.

Award nomination forms may be obtained from the Burke Shire Office, Musgrave Street, Burketown:- telephone (07) 4745 5100, facsimile (07) 4745 5181 or e-mail:- burkesc@bigpond.com. Nominations marked "2008 Australia Day Nomination" must be received at the Burke Shire Office by 4:00pm Monday 7 January 2008. Nominations can be hand delivered, mailed, faxed or e-mailed.

For those members of the community that may be interested in judging the awards, please provide an expression of interest by 6 December 2007.

Weather permitting the awards will be presented at the Council's Australia Day BBQ which will be held at the Shire Hall in Burketown on 26 January 2008. In the event of inclement weather the presentations will be incorporated with Council's Anzac Day function on 25 April 2008.

SENIORS WEEK 2007

To celebrate Senior's Week this year we took the Burke Shire Community Bus to Adels Grove for lunch. We had nine seniors aboard and stopped at the CWA Hall in Gregory where the CWA provided the Seniors with a morning tea and a CWA pannikin as a memento. The seniors had lunch at Adel's Grove and a look around at the old gardens before heading back to Gregory Farm. Ashleigh Brady gave us a very interesting guided tour of the farm complete with running commentary. Thank you to the Burke Shire Community for making this a very pleasurable day for our Seniors.



Seniors being presented with a CWA pannikin



On the bus at Adels Grove

AUSTRALIA, GULF OF CARPENTARIA – KARUMBA

LAT 17° 30' S

LONG 140° 50' E

2007

TIMES AND HEIGHTS OF HIGH AND LOW WATERS

TIME ZONE -1000

SEPTEMBER		OCTOBER		NOVEMBER		DECEMBER	
Time m	Time m	Time m	Time m	Time m	Time m	Time m	Time m
1 0308 1.33 SA 1630 1.60 2155 1.97	16 0509 1.90 0623 1.91 SU 1600 1.35 2350 2.57	1 1148 1.07 2300 3.36 MO	16 1148 1.09 2255 3.41 TU	1 1305 0.50 TH	16 1250 0.76 2330 3.92 FR	1 1334 0.72 SA	16 1306 0.94 2330 3.89 SU
2 0442 1.52 1004 1.83 SU 1638 1.39 2341 2.42	17 1600 1.30 MO	2 1234 0.80 2349 3.62 TU	17 1219 0.95 2325 3.53 WE	2 0009 4.06 1405 0.52 FR	17 1338 0.73 SA	2 0010 3.91 1407 1.00 SU	17 1325 1.21 2343 3.63 MO
3 1643 1.18 MO	18 0005 2.83 1332 1.15 TU	3 1330 0.61 WE	18 1304 0.82 TH	3 0054 3.90 1502 0.63 SA	18 0005 3.85 1422 0.81 SU	3 0024 3.62 1411 1.38 MO	18 1254 1.60 2342 3.32 TU
4 0030 2.85 1455 0.92 TU	19 0028 3.05 1358 0.96 WE	4 0039 3.75 1433 0.51 TH	19 0000 3.61 1359 0.72 FR	4 0133 3.66 1550 0.85 SU	19 0037 3.70 1500 1.04 MO	4 0029 3.34 1113 1.63 TU	19 0853 1.70 2315 3.04 WE
5 0117 3.20 1531 0.64 WE	20 0058 3.23 1435 0.80 TH	5 0130 3.76 1540 0.47 FR	20 0042 3.64 1458 0.66 SA	5 0204 3.38 1617 1.19 MO	20 0102 3.45 1509 1.42 TU	5 0012 3.10 0928 1.46 WE	20 0809 1.50 2044 2.96 TH
6 0208 3.44 1628 0.47 TH	21 0135 3.34 1530 0.67 FR	6 0226 3.67 1646 0.51 SA	21 0128 3.59 1558 0.70 SU	6 0224 3.08 1430 1.59 TU	21 0115 3.11 1047 1.72 WE	6 0930 1.25 1945 3.17 TH	21 0755 1.24 1747 3.45 FR
7 0306 3.56 1732 0.38 FR	22 0223 3.40 1642 0.59 SA	7 0325 3.50 1744 0.66 SU	22 0216 3.46 1700 0.86 MO	7 0232 2.79 1115 1.62 WE	22 0056 2.75 0948 1.60 TH	7 0933 1.13 1930 3.53 FR	22 0805 0.99 1816 3.96 SA
8 0413 3.57 1838 0.36 SA	23 0321 3.40 1801 0.56 SU	8 0422 3.27 1830 0.92 MO	23 0306 3.24 1801 1.17 TU	8 0050 2.57 1108 1.45 TH	23 0904 1.37 1843 3.16 FR	8 0930 1.09 1942 3.81 SA	23 0829 0.79 1858 4.35 SU
9 0524 3.51 1936 0.43 SU	24 0426 3.34 1908 0.63 MO	9 0507 3.00 1903 1.28 TU	24 0354 2.93 1905 1.62 WE	9 1112 1.32 2035 3.11 FR	24 0905 1.11 1915 3.68 SA	9 0930 1.06 2001 3.99 SU	24 0900 0.65 1945 4.59 MO
10 0630 3.39 2026 0.58 MO	25 0529 3.23 2008 0.83 TU	10 0530 2.71 1557 1.68 WE	25 0431 2.53 1204 1.79 TH	10 1045 1.26 2045 3.40 SA	25 0917 0.86 1955 4.07 SU	10 0944 1.04 2027 4.10 MO	25 0941 0.55 2035 4.69 TU
11 0725 3.20 2106 0.84 TU	26 0625 3.02 2108 1.15 WE	11 0541 2.43 1324 1.67 TH	26 0033 2.06 0421 2.11 FR	11 1022 1.20 2101 3.60 SU	26 0941 0.66 2039 4.33 MO	11 1010 1.00 2059 4.16 TU	26 1026 0.50 2125 4.68 WE
12 0804 2.94 2139 1.18 WE	27 0713 2.71 2240 1.54 TH	12 0225 2.10 0548 2.19 FR	27 1010 1.40 2007 3.19 SA	12 1026 1.12 2123 3.73 MO	27 1019 0.54 2128 4.46 TU	12 1044 0.93 2133 4.19 WE	27 1110 0.52 2210 4.56 TH
13 0824 2.64 2138 1.55 TH	28 0024 1.55 0751 2.31 FR	13 1333 1.46 2157 2.84 SA	28 1006 1.08 2053 3.59 SU	13 1046 1.04 2149 3.81 TU	28 1109 0.48 2216 4.46 WE	13 1122 0.85 2209 4.20 TH	28 1149 0.63 2247 4.34 FR
14 0816 2.36 1544 1.59 FR	29 0310 1.63 0810 1.88 SA	14 1132 1.39 2213 3.07 SU	29 1026 0.81 2141 3.89 MO	14 1118 0.94 2220 3.87 WE	29 1200 0.48 2303 4.36 TH	14 1200 0.80 2243 4.17 FR	29 1222 0.84 2309 4.05 SA
15 0815 2.11 1545 1.44 SA	30 1130 1.41 2207 3.00 SU	15 1129 1.24 2231 3.26 MO	30 1107 0.63 2230 4.07 TU	15 1201 0.84 2254 3.91 TH	30 1250 0.56 2343 4.17 FR	15 1236 0.81 2310 4.07 SA	30 1243 1.17 2312 3.76 SU
		31 1204 0.53 2320 4.12 WE				31 1215 1.56 2309 3.50 MO	

© Copyright Commonwealth of Australia 2005

Bureau of Meteorology

National Tidal Centre

Datum of Predictions is Lowest Astronomical Tide

* Denotes extra Tides

Moon Symbols

● New Moon

○ First Quarter

○ Full Moon

○ Last Quarter

Note !!!

For Burketown Tide times add the following

AND BOATING

1 hour mouth of Albert River

4 hours for Jetty

5 hours for bridge

195 ■