



Phone: 07 4745 5100  
Fax: 07 4745 5181  
office@burke.qld.gov.au

Musgrave Street Burketown  
PO Box 90  
BURKETOWN QLD 4830

## Locating Your Water Meter

Your meter measures the amount of water your property uses. It will generally be located outside in the ground towards the front of the property. Most are at or below ground level and have a metal or plastic lid.

## Reading Your Water Meter

There are several different kinds of water meter available; all have a combination of black and red numbers and/or dials. Several examples are shown below.

The black numbers register kilolitres (kL = a thousand litres). There are then three red numbers or dials showing litres (if you have a fourth red number of dial, this shows tenths of litres). The numbers are read from left to right and the dials are read in a clockwise direction. If you are having trouble reading your meter, contact Council.

### NUMBERS ONLY

☐ kilolitres ☐ litres

#### 4 BLACK NUMBERS AND 3 RED NUMBERS



When reading these water meters **record all numbers**

This is the correct reading on this meter:  
    2 9 3 3



#### 4 BLACK NUMBERS AND 4 RED NUMBERS



Record all **black numbers** and the first **three of the four red numbers**

This is the correct reading on this meter:  
    2 9 3 3 ~~X~~  
 X Do not record the last number

### NUMBERS AND DIALS

☐ kilolitres ☐ litres

When reading water meters **with dials** record the numbers **first** then the dials **in a continuing clockwise direction**

#### NUMBERS AND 1 DIAL



Record all the numbers

Do not record this dial

This is the correct reading on this meter:  
    1 0 1



#### NUMBERS AND 2 DIALS



Record all the numbers first

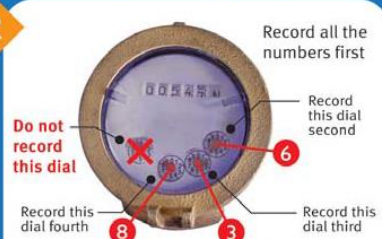
Record this dial second

Do not record this dial

This is the correct reading on this meter:  
    2 8 6



#### NUMBERS AND 4 DIALS



Record all the numbers first

Record this dial second

Record this dial third

Record this dial fourth

This is the correct reading on this meter:  
 5  4  7  6 3 8



## Detecting Leaks With Your Water Meter

1. Turn off all taps tightly and ensure nobody will be using any water on the property for the next hour
2. Find your water meter and write down the numbers shown
3. After an hour, check the reading. If the numbers have changed, you may have a leak
4. If it appears there may be a leak, the first item to check is the toilets. Turn off the water valves under each toilet, then repeat the first three steps
5. If the numbers haven't changed this time, you may have a leaking toilet. To check this, put a little food dye in the cistern. If, without flushing, the colouring appears in the bowl, the cistern needs to be repaired. (After the test, flush your toilet twice so that the food colouring doesn't stain)
6. If the numbers have changed again, there is a leak elsewhere on your property. For further investigation, contact a licenced plumber

### Water-Saving Tips:

Here are a few simple ways you can reduce your water usage. For more information and ideas, visit the Burke Shire Council website ([www.burke.qld.gov.au](http://www.burke.qld.gov.au)).

### Outside:

- 💧 Only water the yard early in the morning or in the evenings/at night
- 💧 You don't need to water every day, every few days is ample
- 💧 Don't over-water; use a timer if you can
- 💧 Try to avoid watering when it is very windy – a lot of the water will evaporate or blow away
- 💧 Switch to a water-saving sprinkler or irrigation system
- 💧 Mulch your garden beds to avoid losing too much water through evaporation
- 💧 Set your mower's cutting height to 3cm or higher to avoid cutting your lawn too short, this will reduce the amount of water you need to keep your grass nice and green
- 💧 Wash the car using a bucket of water rather than the hose
  - If you're able, wash the car over the lawn rather than on concrete or bitumen
- 💧 Sweep or rake outdoor paths to keep them clean, rather than hosing them off

### Inside:

- 💧 A leaking toilet can waste thousands of litres of water, see above for the testing process
  - A hissing sound or ripples in the bowl could be signs of a leak
- 💧 A running tap uses up to 16 litres every minute
  - Turn the tap off when you brush your teeth
  - Put a little bit of warm water in the sink to rinse your razor, rather than running the tap when you shave
  - Part-fill the sink when rinsing dishes or washing fruit and vegies
- 💧 When possible, wait until you have a full load of washing to do, rather than doing multiple small loads – this not only saves water, but also cuts down on detergent use too
- 💧 If you notice a leaky tap, fix it as soon as you can; a slowly leaking tap can waste over 9,000 litres in a year, and the solution is often as simple as replacing a 10-cent washer
- 💧 When you buy new taps, shower heads and washing machines, consider purchasing water-saving options; spending an extra few dollars here can save you hundreds over time. Look for the Watermark logo on tap-ware and compare water efficiency star ratings on appliances

